



Sorter i afprøvning
2016-17

Contents

Page

THE DANISH AGRIFISH AGENCY	3
THE TYSTOFTEFOUNDATION	3
THE OFFICIAL VARIETY TESTING	7
PUBLICATIONS	10
PRINCIPLES FOR ADDITION TO THE VARIETY LIST.....	10
PRINCIPLES FOR NATIONAL LISTING AND GRANTING OF PLANT BREEDERS' RIGHTS	11
PRINCIPLES FOR COMMUNITY PLANT VARIETY RIGHTS	14
WINTER WHEAT A-TESTING.....	16
WINTER WHEAT B-TESTING.....	17
WINTER BARLEY A-TESTING.....	18
WINTER BARLEY B-TESTING.....	18
RYE A-TESTING.....	19
RYE B-TESTING.....	19
TRITICALE SPRING A-TESTING.....	20
TRITICALE SPRING B-TESTING.....	20
TRITICALE WINTER A-TESTING.....	20
TRITICALE WINTER B-TESTING.....	20
SPRING BARLEY A-TESTING.....	20
SPRING BARLEY B-TESTING.....	21
SPRING BARLEY B-TESTING ORGANIC.....	22
OATS A-TESTING.....	23
OATS B-TESTING.....	23
SPRING WHEAT A-TESTING.....	23
SPRING WHEAT B-TESTING.....	23
FIELD PEA A-TESTING.....	24
FIELD PEA B-TESTING.....	24
FIELD BEAN SPRING A-TESTING.....	24
FIELD BEAN SPRING B-TESTING.....	24
WINTER RAPE A-TESTING.....	24
WINTER RAPE B-TESTING.....	26
WINTER RAPE COMPONENTS A-TESTING.....	27
SPRING RAPE A-TESTING.....	30
SPRING RAPE COMPONENTS A-TESTING.....	30
POTATO A-TESTING.....	31
POTATO – INDUSTRIAL PRODUCTION A-TESTING.....	31
SUGER BEET A-TESTING.....	31
SUGER BEET B-TESTING.....	32
FODDER BEET A-TESTING.....	33
FODDER BEET B-TESTING.....	33
BEETS FOR ENERGY PRODUCTION A-TESTING.....	33
BEETS FOR ENERGY PRODUCTION B-TESTING.....	33
SILAGE MAIZE A-TESTING.....	34

SILAGE MAIZE B-TESTING	34
MAIZE WHOLE GRAIN A-TESTING	36
MAIZE WHOLE GRAIN B-BESTING	36
PERENNIAL RYEGRASS, FODDER A-TESTING.....	36
PERENNIAL RYEGRASS, FODDER B-TESTING.....	36
RED FESCUE FODDER B-TESTING.....	38
MEADOW FESCUE A-TESTING	38
MEADOW FESCUE B-TESTING.....	38
TIMOTHE A-TESTING	38
TIMOTHE B-TESTING	38
WHITE CLOVER A-TESTING	38
WHITE CLOVER B-TESTING	38
RED CLOVER A-TESTING.....	38
LUCERNE B-TESTING.....	38
PERENNIAL RYEGRASS TURF TESTING	39
RED FESCUE TURF TESTING	39
VEGETABLE SPECIES - PARSLY	39
LIST OF TITLE-HOLDER, MAINTAINERS AND AGENTS	40

The Danish AgriFish Agency

The Danish AgriFish Agency is a governmental agency (www.lfst.dk) under the Ministry of Environment and Food of Denmark. The staff of the Danish Agrifish Agency, a total of approximately 1,200, strives countrywide to create the optimal conditions for sustainable growth and green transformation in the fields of:

- Agriculture
- Fisheries and aquaculture
- Plants and horticulture

Our aim is to secure an efficient and professional administration and harvest the most benefits from working across our respective areas.

The Danish AgriFish Agency has delegated the competence to approve new varieties and seed certification to the TystofteFoundation. All technical and administrative tasks in relation to listing of new varieties, granting of plant breeders rights and seed certifications are thus performed by the TystofteFoundation

The TystofteFoundation

The main responsibility of the TystofteFoundation is to conduct as effective as possible the technical and administrative tasks according to the rules concerning the statutory variety testing for registration on the National List, the grant of plant variety protection or the guidelines concerning seed certification.

The TystofteFoundation is an independent organizational and financial unit serving the Danish seed industry (breeders and multipliers) with the necessary technical examinations and approvals needed. The members of board of the TystofteFoundation are nominated by relevant organisations, like

- Landbrug og Fødevarer, chairman Thor G. Koefoed
- Sammenslutning af danske Sortsejere,
 - vice chair, director Kim B Pedersen and
 - director Birger Eriksen
- Danish Seed, director Anders Mondrup
- Employees, DUS coordinator Erik Lawaetz
- Pajbjergfonden, Lise Nistrup Jørgensen

Between TystofteFoundation and the Danish AgriFish Agency, which is the responsible authority a co-operation agreement has been signed, which among others, describes the interfaces. Annex 1 presents the principal concepts and co-operation relations.

The Danish AgriFish Agency, Plants by director Kristine Riskær regularly follows the Foundations development and operations by participating as an observer at all board meetings.

The Danish AgriFish Agency is in charge of elaboration of guidelines, monitoring the work of the Tystoftefoundation and represent Denmark in the administrative bodies of UPOV and CPVO.

TystofteFoundation is responsible for the international Danish representation in the technical bodies in UPOV and CPVO and operates the technical examinations concerning variety testing and seed certification as well the administrative tasks related.

On the 1-1-2017 the Danish AgriFish Agency delegated the competence of technical testing and administrative tasks regarding national listeng, plant breeders rights and seed certification to the TystofteFoundation. The transfer of tasks is described in a letter from the Danish Ministry of Food and Environment (2017-418) and Danish regulation No. 1711 of 20-12-2016 regarding National Listing. The website (Tystofte.dk) is running and develops still with new aspects. The website is maintained in Danish and English with general information on the foundation, application procedure, testing costs, status of the national list and with actual test results from our VCU-testing.

During the growing season, these results are made available through the website in line with the approval of the trials validated in cooperation with SEGES and according to the integrated testing between the statutory value testing and Danish Farmers Unions trails (Landsforsøgene).

The DUS testing of the TystofteFoundation is CPVO accredited regarding the the following species.

- Wheat (spring and winter types),
- Barley (spring and winter types),
- Oil Seed Rape (spring and winter types),
- Oats,
- Beet (sugar and fodder ask),
- Broad beans,
- Festulolium and
- Quinoa

and in 2017 the TystofteFoundation plans to extend the DUS-testing with winter rye.

The physical settings:

The TystofteFoundation has approx. 135 ha of land at its disposal (all rented)

Buildings:

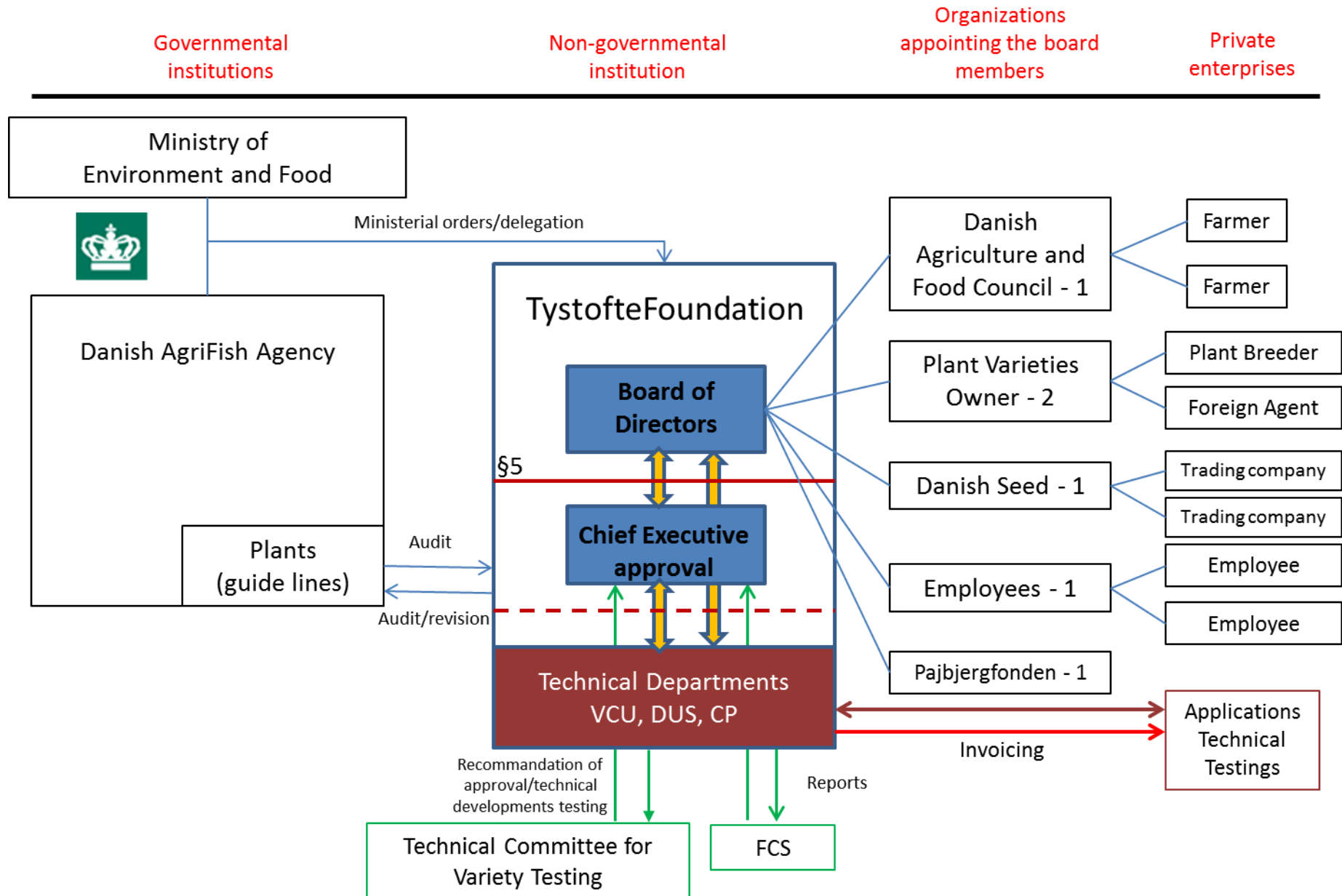
The TystofteFoundation consists of several buildings. The board of the TystofteFoundation has initiated a process to optimized the present buildings by rebuilding modern office and laboratory facilities.

Planned development (call for tender):



Interface between the Danish AgriFish Agency and the TystofteFoundation

from the 1st of Jan 2017



The Official Variety Testing

The official variety testing includes an obligatory testing of new varieties for addition to the National List and an offer of testing with a view to grant Plant Breeders' Rights to individual varieties.

Addition to the National List

The obligatory testing of agricultural and vegetable varieties is based on the legislation drawn up in accordance with EU directives. The legislation covers the most important species of agricultural plants and vegetables. Only tested and controlled material of agricultural and vegetable varieties and amenity grasses can be marketed within the professional domain of the EU territory.

The condition of control of seed of a variety is that the variety is included in the Danish National List or in a similar list of another EU Member State and the seed is multiplied according to the EU-legislation.

Purpose:

By testing for distinctness, uniformity and stability (DUS) to identify and describe new varieties in order to secure seed of varietal genuineness for the user.

in agricultural plants the testing for value for cultivation and use (VCU) secures the user new varieties with better characters as regards, resistance yield and/or quality.

National Plant Breeders' Rights

The official variety testing of all agricultural and horticultural species for Plant Breeders' Rights is carried out in accordance with The Plant Variety Protection Act, based on an international convention (the UPOV-convention). The whole plant kingdom is covered by this legislation. The technical testing consists of examinations for distinctness, uniformity and stability (DUS).

Extent of the testing

DUS testing:

- Testing of agricultural plants, amenity grasses vegetables and other horticultural plants.
- In case a variety is applied both for addition to the National List and for Plant Breeders' Rights the same DUS test is used as the basis of approval.

The testing is performed according to the

1. CPVO technical protocols
2. UPOV guidelines
3. National guidelines and is accredited by the CPVO

VCU testing:

The TystofteFoundation supervises and coordinates the VCU testing of all species of agricultural plants, and one part of the testing takes physically place at the premises of the TystofteFoundation. The VCU testing assesses the yield, resistance and quality of the varieties, and for grasses their growth rhythm. The premises for the testing are with the TystofteFoundation, the Agricultural Advisory Service, and representatives of plant breeders and maintainers/holders.

Additional examinations can be included in the testing if required, depending on the characteristics of the particular variety in question. The results from the additional examinations form part of the basis on which decision is taken.

The costs of the technical testing and of requested additional examinations are paid by the applicants.

Testing of agricultural plants is divided into three groups of crops:

- cereals, pulse crops, oilseed crops, root crops, maize, catch crops and sugar beets
- potatoes
- herbage plants

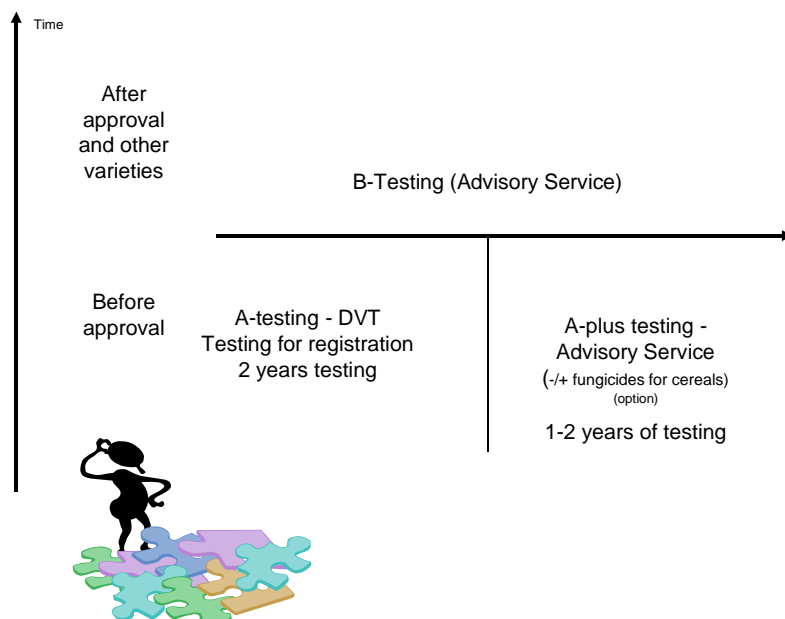
VCU Testing of Cereals, Pulse Crops, Oilseed Crops, Maize and Sugar beets

Varieties of cereals, pulse crops, oilseed crops and maize can be tested in three different combinations:

- A-testing,
- A and A-plus testing or
- B-testing

A-testing

Varieties applied for inclusion in the Danish Variety List are tested in this group. The normal testing period is two years. The testing takes place on locations at the



TystofteFoundation, at the Agricultural Advisory Centre (trial hosts) and at breeders. This testing is 100% self-financed by fees.

A-plus-testing

Varieties applied for A-testing can be included in the A-plus-testing. The testing is a supplement to the statutory VCU testing and has the purpose to provide an extended basis for recommendations to the farmers on choosing varieties.

The testing, for which varieties have to be applied, is voluntary and does not form part of the statutory testing. The testing period is one or two years depending on the time of application. Thus, a variety having been in A-testing one year can be included in the A-plus-testing the second year. The responsibility for this testing is placed with the Agricultural Advisory Centre (SEGES).

B-testing

Varieties can be included in the B-testing if they have entered the Danish National List, the EU Common Catalogue or if they are of particular interest in Denmark. The testing is carried out each year, and the varieties must be applied for each year to participate. The testing is an offer and does not form part of the statutory VCU testing. The responsibility for the testing is placed with the Agricultural Advisory Centre (SEGES).

- sugar beets

Together with Nordic Beet Research (NBR) an integrated VCU-testing of varieties of sugar beet applied for National Listing and varieties applied for recommendation has been performed since 2006.

Observation Plots

Observation plots are included as part of the VCU testing of cereals. Varieties which have been applied for the A- or B-testing are included in the observation plots.

Re-testing of previously approved varieties

Re-testing of varieties which have already entered the National List takes place through the B-testing of varieties of cereals, pulse crops, oilseed crops, maize and sugar beets. This testing is carried out at the Agricultural Advisory Centre (SEGES) or Nordic Beet Research (NBR) and the varieties must be applied each year for testing.

Potatoes

The TystofteFoundation, and the breeders have entered into a co-operation on the VCU testing of potatoes regarding the locations and implementation of the testing.

VCU Testing of Herbage Plants

The statutory VCU testing of herbage plants is conducted in cooperation with the Danish Advisory Service (SEGES) and coordinated with the retesting of varieties for continued recommendation to the Danish farmers. The basic idea of the coordinated testing is that varieties for National Listing undergo the same testing as retested varieties.

Identity control of varieties

All varieties under testing are ID-controlled against the standard sample of the variety.

Extent of the administration

The TystofteFoundation performs the daily administrative tasks of all registered varieties (NL + PVP). The tasks are:

- Receipt of applications for entry on the National List and / or for Plant Variety Protection, inclusive further proceedings.
- Co-operation with other countries, such as receipt and dispatch of DUS reports.
- Administration of proposals of variety denominations.
- Publishing of "Danish Gazette for Plant Varieties" once/month and "The Official National List of Varieties" once/year.
- Invoicing of fees.
- Decision on approval

Furthermore, the Foundation has the presidency and/or the secretariat for several organs related to the official variety testing or seed certification.

Publications

The TystofteFoundation publishes "Meddelelser fra Sortsafprøvningen" (the Danish Gazette for Plant Varieties), the "Officiel Sortsliste" (National List of Varieties) which are published monthly at <http://www.tystofte.dk/sorter-status/meddelelser-fra-sortsafproevning/2017-2/>

The results of the VCU testing are published in Danish descriptive variety list, issued by the TystofteFoundation. Annual results are also published in "Sortsforsøg" (Survey of the National Trials) in co-operation with the SEGES .

Principles for Addition to the Variety List

Legal background:

- Directives of the European Union concerning the listing of varieties and the declaration of characteristics and minimum demands for testing
 - 2202/53/EC of 13 June 2002 – Agricultural Crops
 - 2002/55/EC of 13 June 2002 – Vegetable Crops
 - 2011/68/EC of 1 July 2011 – Technical requirements of the testing to be performed
- The order of the Danish Ministry of Agriculture, Fisheries and Food concerning variety testing No 1711 of 20 December 2016 and naming of plant novelties No 942 of 11 August 2015.

Conditions for addition:

- The variety must - regardless of an artificial or natural origin of the basic material - be clearly distinguishable by one or more important characteristics from any other variety known, and these characteristics must be recognisable and to be clearly described.
If the testing proves that two or more varieties cannot be clearly distinguished, the variety that was first duly applied is approved.
- The variety must be sufficiently homogeneous, having regard to the particular features of its sexual reproduction or vegetative propagation, when it consists of plants - apart from single off-types - which are similar with regard to the characteristics laid down for the testing of homogeneity of that particular species.
- The variety must be stable in its essential characteristics; that is to say, it must remain true to its description after repeated reproduction or propagation or, where the breeder has defined a particular cycle of reproduction or multiplication, at the end of each cycle.
- The variety must have a satisfactory value for cultivation and use compared to other varieties accepted in the National List, and hold out a clear improvement either for cultivation or as regards the uses of the crops or the products derived there from. The decision is taken after an overall judgement of the qualities in the way that other favourable ones can counterbalance single unfavourable qualities. This condition does not apply to varieties of herbage for other purposes than production of fodder (amenity grasses) and vegetables.
A variety can be denied inclusion on the National List in case the growing of that variety causes a risk to the health of humans, animals or plants.

Decision on Addition to the National List:

The director of the TystofteFoundation takes the decision regarding inclusion of a variety in the National List on the basis of the examination results and on the recommendation from the technical board for variety testing.

The recommendation of the technical board is made known to the applicant, who is entitled within a fixed date to object or to submit the matter, before the recommendation is given to the director of the TystofteFoundation for approval. The decision of the director of TystofteFoundation can be arranged and the complaint will be handled by the Dansih AgriFish Agency.

Varieties of herbage for other purposes than production of fodder (amenity grasses) may be given recognition, in case the testing shows that the varieties have a satisfactory value for cultivation and use. These varieties have a right to have an 'S' added to the denomination as sign of recognition.

A variety register is kept with information about each variety, i.e. the description of the variety and all facts that underlie the approval.

Anyone with a legitimate interest in this information has access to the register, but not to the results of the possible testing and description of the genealogic components of the variety, if the applicant wants them to be in confidence.

The period of validity:

Approval of a variety for addition to the National List is valid until the expiration of the 10th year after approval has been given. The approval may be prolonged for a period of 10 years from the time of expiration, provided that the conditions for approval still exist.

Conditions for prolongation of the approval are that the variety still fulfils the requirements of DUS-testing, which is assessed in the post control of listed varieties, and that the variety continues to be of some importance in cultivation and use, which must be shown by stating the area of propagation of the variety in question.

Request for prolongation must be presented at least 2 years before the expiry of approval. If the treatment of the request has not been finished by the expiration of the approval a temporary prolongation is granted till the case is settled.

Certification and marketing of propagating material of an approved variety may take place until June the 30th in the 3rd year after expiration of the approval.

Common Catalogue for the EU Territory:

The member states of the EU have been given rules for variety testing and approval, the reason for which is the decision of establishing a common list with validity in the EU. This list ensures free trade of seed of the listed varieties within the EU territory.

However, a free market for varieties on the common list is not unconditional, as a member state may ask for exemption for one or more varieties within its area or part thereof.

When doing so, the member state in question must prove either that the variety is not distinct, homogeneous or stable, or that it has no satisfactory value for cultivation and use in the area of that member state.

Usually varieties approved for addition to a National List will also be approved for addition to the common EU-List after a short period of time (3-4 months).

Principles for National Listing and Granting of Plant Breeders' Rights

Legal background:

- The International Convention for Protection of New Varieties (UPOV-Convention) of 1961 - latest revised in 1991.
- Danish Law on Plant Novelty - Act No. 412 of 31 May 2000 - with amendments pursuant to Act No. 190 of 12 March 2009.
- The ministerial order regarding denomination of plant novelty No 1491 of 15 December 2010.

Conditions for the Grant of Plant Breeders' Rights:

Varieties of all genera and species of plants can be protected as plant novelties if they, at the time of the grant of protection, are:

- distinct, which means that they by one or more characteristics or combinations of characteristics can be distinguished from any other variety, known at the time of application,
- sufficiently homogeneous,
- stable in their specific characteristics (main characteristics) under propagation, this being performed as stated by the breeder, and
- new, which means that propagation material or harvested material of the variety has not prior to the application been offered for sale, sold or in any other way been handed over, with the consent of the owner and with a view to commercial exploitation of the variety
 - in this country for more than one year, or
 - abroad for more than four years or, as regards grapevines, trees or the rootstocks of those for more than six years.

A variety is always considered to be new,

- even if the material of the variety has been sold or transferred
 - to an official body for statutory purpose
 - to others according to an arrangement or other legal matter with a view to propagation only, or to treatment and storage with a view to propagation, provided that the recipient has not been entitled to use material of the variety,
 - by one company to another company, if the one company is owned by the other company, or both companies are owned by a third company, provided that none of the companies are co-operative societies, and
- even if material or yield of the variety, produced by plants grown with a view to trial or breeding, has been offered for sale, sold or transferred to others provided that it has taken place without reference to the variety. This exception does not apply, however, to varieties used for production of a hybrid variety if repeated application of the variety is necessary for the production, and the material of the hybrid variety is sold or transferred to others.

The Minister of Food, Agriculture and Fisheries may as an exception approve that a variety, not fulfilling the novelty criteria can be protected if it is considered to have agricultural economic interest.

The Minister of Food, Agriculture and Fisheries establishes the provisions concerning the naming of new varieties; the Plant Novelty Board makes decisions concerning approval of proposed denominations.

The variety must be given a denomination that must not be mistakable for the name of another variety in the same class or cause confusion as to the characteristics of the variety, or of the identity of the breeder.

A variety denomination shall be considered to cause its users difficulties as regards recognition or reproduction in the following cases.

- where it is in the form of a “fancy name”
- it consists of a single letter,
- it consists of, or contains as a separate entity, a series of letters not forming a pronounceable word, except where this series is an established abbreviation,
- it contains a number, except where this is an integral part of the name, or where this indicates that the variety is or will be one of a numbered series of biologically related varieties,
- it consists of more than three entities; however, in the case of Article 63(4) of Regulation (EC) 2100/94, more than three entities shall not be considered as an impediment,
- it consists of, or contains an excessively long word,
- it contains a hyphen, a blank space other than between the entities of which it consists, a punctuation mark, an upper and lower case mixture within the entity, a subscript, a superscript, a symbol or a design or other marks.

- where it is the form of a "code"
- it consists of a number or numbers only, except in the case of inbred lines or of similarly specific types of varieties,
- it consists of a single letter,
- it contains more than ten letters, or letters and numbers,
- it contains more than four alternating groups of a letter or letters and a number or numbers,
- it contains a hyphen a blank space other than for separation from a pronounceable word, a punctuation mark, a subscript, a superscript, a symbol or a design or other marks

On submission of the proposal for a variety denomination, the applicant should declare whether the proposed denomination is intended to be in the form of a "fancy name" or of a "code".

If the applicant makes no declaration on the form for the proposed denomination, the denomination shall be considered to be a fancy name.

Decision on Plant Breeders' Rights:

After completion of the examination and satisfying the conditions for protection, the Danish Plant Novelty Board registers the variety in the Register of Plant Novelty and publishes a notice to that effect.

Simultaneously with the publication of the registration, the Board shall issue a certificate of protection, which shall be delivered to the applicant against payment of a registration fee.

Length of the period of protection:

- The certificate of protection shall be valid for a period of one year, and the period of validity may be extended by one year at a time up to 25 years, though for varieties of potatoes up to 30 years, reckoning from the date of issue of the certificate of protection.
- The period of validity of the certificate of protection shall be extended on the payment of an annual registration fee to the Plant Novelty Board.

Extent of protection:

Only with permission of the title holder and only on the conditions specified by the title holder, including payment of suitable royalties, the propagating material of a plant novelty can be

- used for commercial production, propagation or treatment and storage with a view to propagation and
- offered for sale, sold, or stored with a view to sale or handing over.

The Minister can establish provisions that also the one who propagates plant novelties of specified species for commercial use in his own business solely, shall pay royalties to the owner of the variety. This applies correspondingly

- for yield obtained by use of material of a plant novelty, if the owner of the variety has not allowed this use of the material, or has not had the possibility to exercise his rights to the material, and
- for varieties which
 - essentially originate from a plant novelty, if the latter is not itself an essentially derived variety, or
 - are not distinct in relation to the plant novelty, or
 - can only be produced by repeated use of the plant novelty.

The Minister can decide that the above conditions be also applicable as regards products made of material of a plant novelty or the yield thereof.

The terms fixed by the owner of a variety must only concern use and offer for sale, and royalties. The terms shall be reasonable and the same for all producers.

Principles for Community Plant Variety Rights

1st September 1994 a EU regulation concerning protection of new plant varieties entered into force. Regulation No. 2100/94 of 27 July 1994 concerning EU plant variety protection was published in EEC no. 227 of 1 September 1994. The regulation applies from 27 April 1995.

EU variety protection is an alternative to the national plant protection, based upon the International Convention for Protection of New Varieties of Plants (UPOV). The material provisions (requirements to the variety, extent of protection etc.) in the new regulation contain the elements included in the UPOV convention of 1991.

Within EU, only Greece, and Luxembourg and Cyprus have no national plant protection system. The regulation means that a breeder can have his variety protected in the whole EU territory through one application and one decision. The regulation stipulates that a variety cannot at the same time be protected according to the regulation and according to a national legislation in an EU Member State. Besides it is stipulated that plant varieties exploited in the form of an EU variety protection cannot also be exploited for instance by a patent.

The administration of the regulation is taken care of by the Community Plant Variety Office (CPVO), established as an independent EU institution. In connection with the CPVO an Administrative Council is established which shall be advisory in questions within the sphere of the CPVO, and which stipulates the guidelines for the organisation of the CPVO, supervises the budget etc. In the Administrative Council each Member State and the EU Commission have 1 representative and 1 substitute. By voting each Member State has one vote.

Persons being citizens, or who are domiciled in one of the EU Member States or in a state being member of the International Union for Protection of New Varieties (UPOV) can apply for EU variety protection. Besides it is possible for persons, being citizens of, or who are domiciled in, other states than EU- or UPOV Member States to apply for protection, provided that the Administrative Council has made a decision to that effect.

EU plant variety protection comprises varieties of all plant genera and species, including hybrids between genera or species. EU plant variety protection can be granted to varieties being distinct, homogeneous, stable and new. Besides the variety must have a variety denomination.

The demands for distinctness, homogeneity, and stability are the same as those for a variety to be protected according to the Danish Plant Variety Protection Act. Varieties, being applied for EU variety protection will go through an examination for distinctness, homogeneity, and stability (DUS).

2017 placering af forsøgene ved Tystofte



Variety code	Name/Reference	Nation	E: Title-holder V: Maintainer R: Agent	DUS	VCU	Remarks
Agricultural Species						
<u>Winter Wheat A-testing</u>						
28624 S	KWS Malibu/(KW 8182-3-09)	DE	V:KWS LOCHOW/R:KWS Scandi	GK	5	DE
30119 S	Informer/(Br 10101p83)	DE	V:Breun/R:Nordic Seed	3	GK	
30139 S	Sj K0255/(Ancher)	DK	V:Sejet/R:Sejet	GK	3	
30851 S	BB 7766.13 W	DE	V:v.Be/R:v.Be	2	2	DE
30856 S	RW41548	FR	V:Ragt FR/R:RAGT Nordic	2	2	
30858 S	RW41587	FR	V:Ragt FR/R:RAGT Nordic	2	2	
30875 S	DSV 316111/(Pirat)	DE	V:DSV/R:DSV DK	2	2	UK
30888 S	KWS Leif/(KW 2228-14)	DE	V:KWS LOCHOW/R:KWS Scandi	2	2	
30889 S	KWS Tjark/(KW 2919-14)	DE	V:KWS LOCHOW/R:KWS Scandi	2	2	
30890 S	KWS W314	UK	V:KWS GB/R:KWS Scandi	2	2	
30891 S	KWS W319	UK	V:KWS GB/R:KWS Scandi	2	2	
30894 S	MH 15-39	FR	V:KWS Momont/R:KWS Scandi	2	2	FR
30896 S	MH 15-63/(KWS Club)	FR	V:KWS Momont/R:KWS Scandi	2	2	
30897 S	Br 10092p91	DE	V:Breun/R:Nordic Seed	2	2	
30898 S	LG Imposanto/(NIC10-6030-A)	DE	V:Limagrain DE/R:Nordic Seed	2	2	
30899 S	LGWD12-15312-D	DE	V:Limagrain DE/R:Nordic Seed	2	2	
30900 S	Sj L110	DK	V:Sejet/R:Sejet	2	2	
30901 S	Sj L123	DK	V:Sejet/R:Sejet	2	2	
30902 S	Sj L288	DK	V:Sejet/R:Sejet	2	2	
30903 S	Sj K161	DK	V:Sejet/R:Sejet	2	2	
30907 S	SC 2520	FR	V:Secobra FR/R:N&S	2	2	FR
30934 UAF	SW 15394	SE	V:Lantmännen	2	-	
30936 S	NOS 18039.11	DK	V:Nordic Seed/R:Nordic Seed	2	2	
30938 S	NOS 509011.08	DK	V:Nordic Seed/R:Nordic Seed	2	2	
30940 S	NOS 509120.16	DK	V:Nordic Seed/R:Nordic Seed	2	2	
30942 S	NOS 509133.05	DK	V:Nordic Seed/R:Nordic Seed	2	2	
31001 UAF	LW 06W596-12	NL	V:Wiersum	2	-	
31025 UAF	LGWD11-13207-D	FR	V:LG Europe	1	-	
31026 UAF	Nord 11044/032	DE	V:NS-LANGENSTEIN	1	-	
31605 S	SEC 312-07-04	DE	V:Secobra DE/R:Nordic Seed	1	1	
31610 S	LGWD14-4219-B	FR	V:LG Europe/R:Nordic Seed	1	1	
31619 S	STRU 120635s1	DE	V:Strube/R:Nordic Seed	1	1	
31620 S	STRG 4019'14	DE	V:Strengs/R:Nordic Seed	1	1	
31621 S	DSV 316127	DE	V:DSV/R:DSV DK	1	1	
31626 S	RW41521	FR	V:Ragt FR/R:RAGT Nordic	2	1	UK
31627 S	RW41640	FR	V:Ragt FR/R:RAGT Nordic	1	1	UK
31628 S	RW41667	FR	V:Ragt FR/R:RAGT Nordic	1	1	UK
31629 S	RW61605	FR	V:Ragt FR/R:RAGT Nordic	1	1	
31630 S	KM 15-25	FR	V:KWS Momont/R:KWS Scandi	1	1	
31631 S	KM 16-17	FR	V:KWS Momont/R:KWS Scandi	1	1	
31633 S	KM 16-18	FR	V:KWS Momont/R:KWS Scandi	1	1	
31634 S	KW 2616-14	DE	V:KWS LOCHOW/R:KWS Scandi	1	1	
31635 S	KW 4078-1-13	DE	V:KWS LOCHOW/R:KWS Scandi	2	1	DE
31636 S	KW 4939-7-13	DE	V:KWS LOCHOW/R:KWS Scandi	2	1	DE
31637 S	KWS W346	UK	V:KWS GB/R:KWS Scandi	1	1	
31693 UAF	SW 25673/(Jackpot)	SE	V:Lantmännen	1	-	
31694 UAF	SW 35077/(Jonas)	SE	V:Lantmännen	1	-	
31695 UAF	SW 35252/(Juvel)	SE	V:Lantmännen	1	-	
31697 S	WPB 09W0879-01	NL	V:Wiersum/R:Sejet	1	1	
31698 S	NORD 15/215	DE	V:NS-LANGENSTEIN/R:Sejet	-	1	Only VCU
31699 S	Sj L024	DK	V:Sejet/R:Sejet	1	1	

Variety code	Name/Reference	Nation	E: Title-holder V: Maintainer R: Agent	DUS	VCU	Remarks
31700 S	Sj L037	DK	V:Sejet/R:Sejet	1	1	
31701 S	Sj L087	DK	V:Sejet/R:Sejet	1	1	
31702 S	Sj L119	DK	V:Sejet/R:Sejet	1	1	
31703 S	SJ L262	DK	V:Sejet/R:Sejet	1	1	
31704 S	Sj L632	DK	V:Sejet/R:Sejet	1	1	
31705 S	NOS 509180.09	DK	V:Nordic Seed/R:Nordic Seed	1	1	
31706 S	NOS 510032.7	DK	V:Nordic Seed/R:Nordic Seed	1	1	
31707 S	NOS 510037.5	DK	V:Nordic Seed/R:Nordic Seed	1	1	
31708 S	NOS 510044.9	DK	V:Nordic Seed/R:Nordic Seed	1	1	
31709 S	NOS 510050.17	DK	V:Nordic Seed/R:Nordic Seed	1	1	
31710 S	NOS 510050.19	DK	V:Nordic Seed/R:Nordic Seed	1	1	
31711 S	NOS 510139.12	DK	V:Nordic Seed/R:Nordic Seed	1	1	
31713 S	FD15WW071	FR	V:FD/R:N&S	1	1	
31714 S	Br 9380a86	DE	V:Breun/R:N&S	-	1	Only VCU
31728 UAF	WPB 09W1012-02	NL	V:Wiersum	1	-	

Winter Wheat B-testing

14162 SP	Ure/(P.H. Hvede)	DK	E:Hummeluhr/V:Hummeluhr/R:Hummeluhr			28
22241 SP	Hereford/(Sj 04-9)	DK	E:Sejet/V:Sejet/R:Sejet		13	
25516 S	KWS Dacanto/(KW 3344-5-05)	DE	V:KWS LOCHOW/R:KWS Scandi		9	
26496 S	Torp/(NOS 14012.23)	DK	V:Nordic Seed/R:Nordic Seed		8	
27293 S	Pistoria/(Sj 6186059)	DK	V:Sejet/R:Sejet		7	
27307 S	Nuffield/(NOS 14012.16)	DK	V:Nordic Seed/R:Nordic Seed		7	
27329 RS	KWS Cleveland/(KWS W 194)	DE	V:KWS/R:KWS Scandi		7	
27345 RS	Elixer/(LW 99Z313-21)	NL	V:Wiersum/R:Nordic Seed		7	
27872 S	Ohio/(BB 715508)	DE	V:v.Be/R:Nordic Seed		6	
27910 S	Substance/(Sj 7388006)	DK	V:Sejet/R:Sejet		6	
27912 S	Creator/(Sj 8544003)	DK	V:Sejet/R:Sejet		6	
27916 S	Benchmark/(Sj 8563021)	DK	V:Sejet/R:Sejet		6	
28618 S	KWS Nils/(KW 8079-4-09)	DE	V:KWS LOCHOW/R:KWS Scandi		5	
28619 S	Viborg/(MH 12-23)	FR	V:KWS Momont/R:KWS Scandi		5	
28643 S	Sheriff/(Sj 9710002)	DK	V:Sejet/R:Sejet		5	
28654 RS	KWS Lili/(KWS W227)	DE	V:KWS LOCHOW/R:KWS Scandi		-	
29406 S	LEU 30315	DE	V:DSV/R:DSV		4	
29407 S	Ragnar/(LEU 30309)	DE	V:DSV/R:DSV DK		4	
29409 S	Olympus/(DSV 20123)	DE	V:DSV/R:DSV DK		4	
29437 S	Kalmar/(NOS 7191-06 14)	DK	V:Nordic Seed/R:Nordic Seed		4	
29440 S	Output/(SEC G0584 LT3)	DE	V:Secobra DE/R:Nordic Seed		4	
30094 S	NOS 7094-08 20/(Kaldi)	DK	V:Nordic Seed/R:Nordic Seed		3	
30103 S	RGT Universe/(RW41498)	FR	V:Ragt FR/R:RAGT Nordic		3	
30112 S	Marston/(DSV 30118)	DE	V:DSV/R:DSV DK		3	
30119 S	Informer/(Br 10101p83)	DE	V:Breun/R:Nordic Seed		3	
30126 S	KWS Blanche/(KWS W298)	UK	V:KWS GB/R:KWS Scandi		3	
30138 S	Pragtor/(UN232R-32)	FR	V:Unisigma/R:Sejet		3	
30139 S	Sj K0255/(Ancher)	DK	V:Sejet/R:Sejet		3	
30140 S	Sj K0376/(Drachmann)	DK	V:Sejet/R:Sejet		3	
30142 S	Sj 13874003/(Tuxen)	DK	V:Sejet/R:Sejet		3	
30143 S	NOS 7050-08 22/(Canon)	DK	V:Nordic Seed/R:Nordic Seed		3	
30150 S	NOS 17063.17/(Kvarn)	DK	V:Nordic Seed/R:Nordic Seed		3	
30158 RS	Graham/(CCB11H159)	UK	V:Syngenta GB/R:Syngenta DK		3	
30161 RS	KWS Crispin/(KWS W233)	UK	V:KWS GB/R:KWS Scandi		3	
30908 RS	Manitou/(WB 564209)	DE	V:v.Be/R:v.Be		2	
30910 RS	KWS Zyatt/(KWS W254)	DE	V:KWS/R:KWS Scandi		2	

Variety code	Name/Reference	Nation	E: Title-holder V: Maintainer R: Agent	DUS	VCU	Remarks
30948 RS	LGW104	UK	V:Limagrain GB/R:Sejet		-	
30951 RS	Savello/(SY113016)	FR	V:Syngenta FR/R:Syngenta DK		-	
31539 RS	Bruce/(BB 6080.11)	DE	V:v.Be/R:SAATEN-UNION DK		-	
31716 RS	Chevignon/(SUR 260-25)	FR	V:Saaten-Union FR/R:SAATEN-UNION DK		-	
31717 RS	Hyvento/(NOST 9C 282)	DE	V:NS-LANGENSTEIN/R:SAATEN-UNION DK		-	
31718 RS	Baracuda/(LEU 10113-1)	DE	V:DSV/R:DSV		-	
31719 RS	KWS Talent/(KW 2737-12)	DE	V:KWS LOCHOW/R:KWS Scandi		-	
31720 RS	KWSW320	UK	V:KWS GB/R:KWS Scandi		-	
31721 RS	KWS W308	UK	V:KWS GB/R:KWS Scandi		-	
31722 RS	LGWU123	UK	V:Limagrain GB/R:Sejet		-	
31723 RS	LGWU117	UK	V:Limagrain GB/R:Sejet		-	
31724 RS	Safari/(Hadm. 43280-08.3)	DE	V:Syngenta DE/R:Syngenta DK		-	
31725 RS	Gleam/(SY114257)	FR	V:Syngenta FR/R:Syngenta DK		-	
31726 RS	Galerist/(Hadm. 26881-10)	DE	V:Syngenta DE/R:Syngenta DK		-	
31727 RS	SEC 267-08-3	FR	V:Secobra FR/R:N&S		-	

Winter Barley A-testing

30086 S	Neptun/(SJ 128045)	DK	V:Sejet/R:Sejet	3	GK	
30827 S	NOS 911.013-61	DK	V:Nordic Seed/R:Nordic Seed	1	2	
30829 S	NOS 911.002-65	DK	V:Nordic Seed/R:Nordic Seed	1	2	
30831 S	NOS 911.004-76	DK	V:Nordic Seed/R:Nordic Seed	1	2	
30832 S	NOS 911.008-80	DK	V:Nordic Seed/R:Nordic Seed	1	2	
30833 S	SZD 1038	DE	V:Donau/R:Nordic Seed	2	2	
30834 S	KWS Miami/(KW 2-1523)	DE	V:KWS LOCHOW/R:KWS Scandi	2	2	
30835 S	KWS Puzzle/(KW 2-1535)	DE	V:KWS LOCHOW/R:KWS Scandi	2	2	
30843 S	BE 2009082007D	DE	V:v.Be/R:Nordic Seed	2	2	
30853 S	SC 28222 PH	FR	V:Secobra FR/R:N&S	2	2	
30854 S	Hirondella/(AC 08/258/17)	DE	V:Ackermann/R:Nordic Seed	2	2	
30874 S	KWS Akkord/(KW 6-339)	DE	V:KWS LOCHOW/R:KWS Scandi	2	2	
31417 S	NOS 911.007-75	DK	V:Nordic Seed/R:Nordic Seed	1	1	
31418 S	NOS 911.010-80	DK	V:Nordic Seed/R:Nordic Seed	1	1	
31419 S	NOS 911.001-62	DK	V:Nordic Seed/R:Nordic Seed	1	1	
31420 S	NOS 911.016-53	DK	V:Nordic Seed/R:Nordic Seed	1	1	
31574 S	SJ 132133	DK	V:Sejet/R:Sejet	1	1	
31575 S	SJ 143105	DK	V:Sejet/R:Sejet	1	1	
31576 S	SJ 143231	DK	V:Sejet/R:Sejet	1	1	
31577 S	SJ 143341	DK	V:Sejet/R:Sejet	1	1	
31578 S	SJ 143350	DK	V:Sejet/R:Sejet	1	1	
31579 S	SJ 144224	DK	V:Sejet/R:Sejet	1	1	
31622 S	LGBU14-5068-C	FR	V:LG Europe/R:Nordic Seed	1	1	

Winter Barley B-testing

24447 S	KWS Meridian/(LP 6-728)	DE	V:KWS LOCHOW/R:KWS Scandi		10	
24596 S	Matros/(SJ 048330)	DK	V:Sejet/R:Sejet		10	
27875 S	Frigg/(SJ 092375)	DK	V:Sejet/R:Sejet		6	
27889 RS	KWS Infinity/(KWS B104)	DE	V:KWS/R:Nymand		6	
28599 S	Hejmdal/(SJ 104051)	DK	V:Sejet/R:Sejet		5	
28608 RS	Wootan/(SY 210-77)	DE	V:Syngenta DE/R:Nordic Seed		-	
28611 RS	KWS Kosmos/(KW 6-130)	DE	V:KWS LOCHOW/R:KWS Scandi		-	
30086 S	Neptun/(SJ 128045)	DK	V:Sejet/R:Sejet		3	
30088 S	Sobell/(SJ 128113)	DK	V:Sejet/R:Sejet		3	
30105 RS	NORD 08017/8	DE	V:NS-Böhnshausen/R:Sejet		3	
30107 RS	Mercurioo/(SY 211-98)	DE	V:Syngenta DE/R:Syngenta DK		3	

Variety code	Name/Reference	Nation	E: Title-holder V: Maintainer R: Agent	DUS	VCU	Remarks
30109 RS	KWS Orwell/(KWSB111)	UK	V:KWS GB/R:KWS Scandi		3	
30861 RS	KWS Higgins/(KW 6-331)	DE	V:KWS LOCHOW/R:KWS Scandi		-	
30862 RS	KWS Astaire/(KW 6-341)	DE	V:KWS LOCHOW/R:KWS Scandi		-	
30863 RS	KWS Moselle/(KWS B122)	UK	V:KWS GB/R:KWS Scandi		-	
30865 RS	Memento/(SC 16666 OH)	DE	V:Secobra DE/R:N&S		-	
30867 RS	Sonnengold/(324-18)	DE	V:Secobra DE/R:N&S		-	
30869 RS	LGBU 13-6446-B	FR	V:LG Europe/R:Nordic Seed		-	
30870 RS	Bazooka/(SY212-118)	UK	V:Syngenta GB/R:Syngenta DK		-	
30871 RS	Belfry/(SY212-124)	UK	V:Syngenta GB/R:Syngenta DK		-	
30872 RS	Toreroo/(SY213133)	UK	V:Syngenta GB/R:Syngenta DK		-	
31611 RS	Jettoo/(SY 211-100)	DE	V:Syngenta DE		-	
31612 RS	SY 214285	DE	V:Syngenta DE		-	
31613 RS	NORD 11060/1	DE	V:NS-LANGENSTEIN		-	
31614 RS	Funky/(MH07KU37)	FR	V:KWS Momont		-	
31615 RS	KWS B125	UK	V:KWS GB		-	
31616 RS	KWS B124	UK	V:KWS GB		-	
31617 RS	KW 6-451	DE	V:KWS LOCHOW		-	
31618 RS	Br 11500r6	DE	V:Breun		-	

Rye A-testing

02 Anmeldt hos TystofteFonden

30080 S	KWS Theofano/(KWS-H159)	DE	V:KWS LOCHOW/R:KWS Scandi	3	GK	DE
30082 S	KWS Serafino/(KWS-H161)	DE	V:KWS LOCHOW/R:KWS Scandi	3	GK	DE
30083 S	KWS Vinetto/(KWS-H162)	DE	V:KWS LOCHOW/R:KWS Scandi	3	GK	DE
30836 S	KWS Trebiano/(KWS-H166)	DE	V:KWS LOCHOW/R:KWS Scandi	2	2	DE
30838 S	KWS Loretto/(KWS-H168)	DE	V:KWS LOCHOW/R:KWS Scandi	2	2	DE
30839 S	KWS Classico/(KWS-H169)	DE	V:KWS LOCHOW/R:KWS Scandi	2	2	DE
30840 S	KWS Lozano/(KWS-H171)	DE	V:KWS LOCHOW/R:KWS Scandi	2	2	DE
30841 S	KWS Piano/(KWS-H172)	DE	V:KWS LOCHOW/R:KWS Scandi	2	2	DE
30842 S	KWS Teramo/(KWS-H173)	DE	V:KWS LOCHOW/R:KWS Scandi	2	2	DE
30850 S	HYH300	DE	V:Hybro/R:Nordic Seed	2	2	DE
31566 S	KWS-H176	DE	V:KWS LOCHOW/R:KWS Scandi	1	1	DE
31567 S	KWS-H177	DE	V:KWS LOCHOW/R:KWS Scandi	1	1	DE
31568 S	KWS-H178	DE	V:KWS LOCHOW/R:KWS Scandi	1	1	DE
31569 S	KWS-H179	DE	V:KWS LOCHOW/R:KWS Scandi	1	1	DE
31570 S	KWS-H180	DE	V:KWS LOCHOW/R:KWS Scandi	1	1	DE
31571 S	KWS-H181	DE	V:KWS LOCHOW/R:KWS Scandi	1	1	DE
31572 S	KWS-H182	DE	V:KWS LOCHOW/R:KWS Scandi	1	1	DE
31573 S	KWS-H183	DE	V:KWS LOCHOW/R:KWS Scandi	1	1	DE
31603 S	DH372	DE	V:Nordic Seed DE/R:Nordic Seed	1	1	DE
31604 S	DH344/(Poseidon)	DE	V:Nordic Seed DE/R:Nordic Seed-		1	Only VCU
31606 S	HYH299	DE	V:Hybro/R:Nordic Seed	-	1	Only VCU
31607 S	HYH301	DE	V:Hybro/R:Nordic Seed	-	1	Only VCU

Rye B-testing

23064 S	Palazzo/(LPH88)	DE	V:KWS LOCHOW/R:Sejet		12	
27255 S	KWS Bono/(KWS-H119)	DE	V:KWS LOCHOW/R:KWS Scandi			7
28594 S	KWS Livado/(KWS-H141)	DE	V:KWS LOCHOW/R:KWS Scandi			5
29378 S	KWS Binntto/(KWS-H145)	DE	V:KWS LOCHOW/R:KWS Scandi			4
29380 S	KWS Eterno/(KWS-H147)	DE	V:KWS LOCHOW/R:KWS Scandi			4
29384 S	KWS Florano/(KWS-H151)	DE	V:KWS LOCHOW/R:KWS Scandi			4
29457 RS	SU Performer 90+10%population/(HYH257)	DE	V:Hybro/R:Nordic Seed		-	
30078 S	KWS Edmondo/(KWS-H157)	DE	V:KWS LOCHOW/R:KWS Scandi			3

Variety code	Name/Reference	Nation	E: Title-holder V: Maintainer R: Agent	DUS	VCU	Remarks
30080 S	KWS Theofano/(KWS-H159)	DE	V:KWS LOCHOW/R:KWS Scandi			3
30081 S	KWS Voltano/(KWS-H160)	DE	V:KWS LOCHOW/R:KWS Scandi			3
30082 S	KWS Serafino/(KWS-H161)	DE	V:KWS LOCHOW/R:KWS Scandi			3
30083 S	KWS Vinetto/(KWS-H162)	DE	V:KWS LOCHOW/R:KWS Scandi			3
30084 S	KWS Mattino/(KWS-H163)	DE	V:KWS LOCHOW/R:KWS Scandi			3
30155 RS	SU Bendix 90+10% population/(HYH 263)	DE	V:Hybro/R:Nordic Seed		3	
30156 RS	SU Cossani 90+10% population/(HYH 266)	DE	V:Hybro/R:Nordic Seed		3	
30873 RS	SU Nasri 90+10% populationsrug/(HYH270)	DE	V:Hybro	-		
31623 RS	HYH275/(SU Gerrit 90+10% populationsrug)	DE	V:Hybro/R:Nordic Seed		-	
31624 RS	HYH285/(HYH285 90+10% population)	DE	V:Hybro/R:Nordic Seed		-	

Triticale Spring A-testing

31149 S	HRST4415	PL	V:HODOWLA PL/R:Nordic Seed	2	2	DE
---------	----------	----	----------------------------	---	---	----

Triticale Spring B-testing

32064 RS	DC 07030	PL	V:Danko/R:N&S	-		
----------	----------	----	---------------	---	--	--

Triticale Winter A-testing

31696 S	Sj 110723	DK	V:Sejet/R:Sejet	1	1	DE
---------	-----------	----	-----------------	---	---	----

Triticale Winter B-testing

27323 S	Travoris/(Br 1390a27)	DE	V:Breun/R:N&S		5	
27920 S	Jura/(Sj 060504-3)	DK	V:Sejet/R:Sejet		6	
29438 S	Neogen/(Sj 070901-23-1)	DK	V:Sejet/R:Sejet		4	
30168 RS	Tantris/(Fr 197/10)	DE	V:Oberlimpurg/R:N&S		3	
30170 RS	SW268q	DE	V:SW DE/R:Sejet		3	
30945 RS	Cappricia/(SW 164s)	NL	V:SW NL/R:N&S		-	
31715 RS	FDT 11053	FR	V:FD/R:N&S		-	

Spring Barley A-testing

30408 UAF	SJ 148192	DK	V:Sejet/R:Sejet	GK	-	
31027 S	NOS 111.031-62	DK	V:Nordic Seed/R:Nordic Seed	2	2	
31028 S	RP15010/(RGT Observer)	FR	V:Ragt FR/R:RAGT Nordic	2	2	
31040 S	NOS 110.352-51	DK	V:Nordic Seed/R:Nordic Seed	2	2	
31042 S	NOS 111.026-52	DK	V:Nordic Seed/R:Nordic Seed	2	2	
31044 S	NOS 111.036-53	DK	V:Nordic Seed/R:Nordic Seed	2	2	
31071 UAF	SW C11-0331	FR	V:Secobra FR	2	-	
31072 S	SW C12-1743	SE	V:Secobra FR/R:N&S	2	1	
31073 UAF	SW C12-6316	SE	V:Lantmännen	2	-	
31094 S	KWS 15/2650/(KWS Coralie)	DE	V:KWS LOCHOW/R:KWS Scandi	2	2	
31095 S	KWS 15/3716/(KWS Kellie)	DE	V:KWS LOCHOW/R:KWS Scandi	2	2	
31097 S	CB15-1079	DK	V:Carlsberg/R:Carlsberg	2	2	
31098 S	CB15-1033	DK	V:Carlsberg/R:Carlsberg	2	2	
31099 S	CB15-4038	DK	V:Carlsberg/R:Carlsberg	2	2	
31100 S	CB15-1073	DK	V:Carlsberg/R:Carlsberg	2	2	
31103 S	CB15-7007	DK	V:Carlsberg/R:Carlsberg	2	2	
31105 S	CB15-8026	DK	V:Carlsberg/R:Carlsberg	2	2	
31136 S	SC 101-12E	FR	V:Secobra FR/R:N&S	2	2	DE
31150 S	SJ 152309	DK	V:Sejet/R:Sejet	2	2	
31152 S	SJ 164136	DK	V:Sejet/R:Sejet	2	2	
31153 S	SJ 164182	DK	V:Sejet/R:Sejet	2	2	
31154 S	SJ 164419	DK	V:Sejet/R:Sejet	2	2	

Variety code	Name/Reference	Nation	E: Title-holder V: Maintainer R: Agent	DUS	VCU	Remarks
31155 S	SJ 164455	DK	V:Sejet/R:Sejet	2	2	
31180 UAF	NOS 10006-52	DK	V:Nordic Seed/R:Nordic Seed	2	-	
31182 UAF	NOS 110.194-52	DK	V:Nordic Seed/R:Nordic Seed	2	-	
31183 UAF	NOS 111.034-53	DK	V:Nordic Seed/R:Nordic Seed	2	-	
31218 UAF	RP 14035	FR	V:Ragt FR	2	-	
31882 S	NOS 111.390-52	DK	V:Nordic Seed/R:Nordic Seed	1	1	
31883 S	NOS 111.303-57	DK	V:Nordic Seed/R:Nordic Seed	1	1	
31884 S	NOS 111.317-63	DK	V:Nordic Seed/R:Nordic Seed	1	1	
31885 S	NOS 111.390-08	DK	V:Nordic Seed/R:Nordic Seed	1	1	
31886 S	NOS 111.394-55	DK	V:Nordic Seed/R:Nordic Seed	1	1	
31887 S	NOS 111.396-56	DK	V:Nordic Seed/R:Nordic Seed	1	1	
31892 S	RP16010	FR	V:Ragt FR/R:RAGT Nordic	1	1	
31893 S	RP16033	FR	V:Ragt FR/R:RAGT Nordic	1	1	
31894 S	KWS 15/3382	DE	V:KWS LOCHOW/R:KWS Scandi	1	1	
31895 S	KWS 15/3718	DE	V:KWS LOCHOW/R:KWS Scandi	1	1	
31896 S	KWS 15/4138	DE	V:KWS LOCHOW/R:KWS Scandi	1		
31897 S	KWS 163366	DE	V:KWS LOCHOW/R:KWS Scandi	1	1	
31898 S	KWS 15/2412	DE	V:KWS LOCHOW/R:KWS Scandi	1	1	
31907 S	RP15033/(RGT Hailey)	FR	V:Ragt FR/R:Nordic Seed	1	1	
31910 S	KWS 16/2044	DE	V:KWS LOCHOW/R:KWS Scandi	1	1	
31911 S	KWS 16/3331	DE	V:KWS LOCHOW/R:KWS Scandi	1	1	
31936 S	LGBN1646	FR	V:LG Europe/R:Nordic Seed	1	1	
31955 S	CB16-5097	DK	V:Carlsberg/R:Carlsberg	1	1	
31956 S	CB16-6022	DK	V:Carlsberg/R:Carlsberg	1	1	
31957 S	CB16-7069	DK	V:Carlsberg/R:Carlsberg	1	1	
31958 S	CB16-8001	DK	V:Carlsberg/R:Carlsberg	1	1	
31959 S	CB16-9033	DK	V:Carlsberg/R:Carlsberg	1	1	
31960 S	CB16-9047	DK	V:Carlsberg/R:Carlsberg	1	1	
31961 S	CB16-0227	DK	V:Carlsberg/R:Carlsberg	1	1	
31962 S	CB16-3029	DK	V:Carlsberg/R:Carlsberg	1	1	
31963 S	CB16-4137	DK	V:Carlsberg/R:Carlsberg	1	1	
31964 S	CB16-4157	DK	V:Carlsberg/R:Carlsberg	1	1	
32020 S	Br12834hz1	DE	V:Breun/R:Nordic Seed	1	1	
32021 S	AC 12/689/19	DE	V:Ackermann/R:Nordic Seed	1	1	
32022 S	AC 13/522/7	DE	V:Ackermann/R:Nordic Seed	1	1	
32028 UAF	NOS 111.390-09	DK	V:Nordic Seed/R:Nordic Seed	1	-	
32029 UAF	SJ 152581	DK	V:Sejet/R:Sejet	1	-	
32030 UAF	SJ164377	DK	V:Sejet/R:Sejet	1	-	
32031 S	SJ 164574	DK	V:Sejet/R:Sejet	1	1	
32032 S	SJ 164643	DK	V:Sejet/R:Sejet	1	1	
32033 S	SJ 176305	DK	V:Sejet/R:Sejet	1	1	
32034 S	SJ 176390	DK	V:Sejet/R:Sejet	1	1	
32035 S	SJ 176407	DK	V:Sejet/R:Sejet	1	1	
32275 P	Bor 12037/(Vipekka)	FI	E:Boreal/V:Boreal	1		FI
<u>Spring Barley B-testing</u>						
22405 S	Fairydale/(SJ 032231)	DK	V:Sejet/R:Sejet		13	
25772 S	Evergreen/(Pf 15020-56)	DK	V:Nordic Seed/R:Nordic Seed		9	
26690 S	Laurikka/(NOS 16008-51)	DK	V:Nordic Seed/R:Nordic Seed		8	
27412 S	Invictus/(SJ 111998)	DK	V:Sejet/R:Sejet		7	
27415 S	Charles/(CA613006)	DK	E:Carlsberg/V:Carlsberg/R:Carlsberg		7	
27521 RS	Odyssey/(NSL08-4556-A)	FR	V:Nickerson FR/R:Nordic Seed		7	
27524 RS	KWS Irina/(KWS 09/320)	DE	V:KWS LOCHOW/R:KWS Scandi		7	

Variety code	Name/Reference	Nation	E: Title-holder V: Maintainer R: Agent	DUS	VCU	Remarks
28037 S	RGT Planet/(LSB0769-3306)	FR	V:Ragt FR/R:RAGT Nordic		6	
28149 S	Thermus/(SJ 111703)	DK	V:Sejet/R:Sejet		6	
28159 S	Scholar/(SY 411-285)	UK	V:Syngenta GB/R:Nordic Seed		6	
28819 S	Crossway/(NOS 17263-55)	DK	V:Nordic Seed/R:Nordic Seed		5	
28915 S	KWS Cantton/(KWS 12/4112)	DE	V:KWS LOCHOW/R:KWS Scandi		5	
28995 RS	Dragoon/(SY411-291)	UK	V:Syngenta GB/R:Sejet		-	
29530 S	KWS Fantex/(KWS 13/207)	DE	V:KWS LOCHOW/R:KWS Scandi		4	
29566 S	CB Canut/(CB13-0024)	DK	V:Carlsberg/R:Carlsberg		4	
29569 S	CB Cursor/(CB13-3026)	DK	E:Carlsberg/V:Carlsberg/R:Carlsberg		4	
29571 S	CB Carl/(CB13-6039)	DK	E:Carlsberg/V:Carlsberg/R:Carlsberg		4	
29577 S	Highway/(NOS 19339-81)	DK	V:Nordic Seed/R:Nordic Seed		4	
29589 S	KWS Beckie/(KWS 13/3353)	DE	V:KWS LOCHOW/R:KWS Scandi		4	
29619 S	LG Nabuco/(LGBN1315)	FR	V:LG Europe/R:Nordic Seed		4	
29674 S	Flair/(SJ 148124)	DK	V:Sejet/R:Sejet		4	
29716 RS	Ovation/(LGB12-8317-A)	UK	V:Limagrain GB/R:Limagrain DK		-	
29720 RS	Laureate/(SY 412-328)	DE	V:Syngenta DE/R:Sejet		-	
29723 RS	Crescendo/(SC 35763 M2)	DE	V:Secobra FR/R:N&S		-	
30288 S	Broadway/(NOS 19103-59)	DK	V:Nordic Seed/R:Nordic Seed		3	
30290 S	Subway/(NOS 19338-72)	DK	V:Nordic Seed/R:Nordic Seed		3	
30292 S	Sarbi/(NOS 19341-55)	DK	V:Nordic Seed/R:Nordic Seed		3	
30305 S	RGT Elysium/(RP14029)	FR	V:Ragt FR/R:RAGT Nordic		3	
30308 S	KWS Josie/(KWS 14/4569)	DE	V:KWS LOCHOW/R:KWS Scandi		3	
30315 S	Chimbon/(AC 11/684/120)	DE	V:Ackermann/R:Ackermann		3	
30372 S	Lauxana/(SC 80136 P2)	FR	V:Secobra FR/R:Carlsberg		3	
30376 S	CB Citra/(CB14-3093)	DK	E:Carlsberg/V:Carlsberg/R:Carlsberg		3	
30401 S	Embrace/(SJ 148377)	DK	V:Sejet/R:Sejet		3	
30403 S	Prospect/(SJ 148527)	DK	V:Sejet/R:Sejet		3	
30404 S	Cosmopolitan/(SJ 152037)	DK	V:Sejet/R:Sejet		3	
30432 RS	DZ 11013	DE	/R:Nordic Seed		3	
30442 RS	Chanson/(AC11/684/22)	DE	V:Ackermann/R:SAATEN-UNION DK		3	
30444 RS	LG Figaro/(LGBU12-4217-A)	FR	V:Limagrain GB/R:Limagrain DK		3	
31164 RS	Ellinor/(Br 12130d5)	DE	V:Breun/R:Nordic Seed		2	
32052 RS	SY 414473	CH	V:Syngenta GB/R:Syngenta DK		-	
32053 RS	SY 414476	BE	V:Syngenta DE/R:Syngenta DK		-	
32054 RS	SY 415584	BE	V:Syngenta GB/R:Syngenta DK		-	
32055 RS	SY 415586	BE	V:Syngenta GB/R:Syngenta DK		-	
32056 RS	SY 415653	BE	V:Syngenta GB/R:Syngenta DK		-	
32057 RS	LG Diablo/(LGBU13-1624-A)	FR	V:LG Europe/R:Limagrain DK		-	
32058 RS	LG Tomahawk/(LGBU13-4169-B)	FR	V:LG Europe/R:Limagrain DK		-	
32059 RS	NORD 15/2448	DE	V:NS-LANGENSTEIN/R:Sejet		-	
32060 RS	Etoile/(BR 12597 MZ 14)	DE	V:Breun/R:N&S		-	
32116 RS	Blanding 2017-1	DK			-	
32117 RS	Blanding 2017-2	DK			-	
32118 RS	Blanding 2017-3	DK			-	
32119 RS	Blanding 2017-4	DK			-	
32120 RS	Blanding 2017-5	DK			-	
32121 RS	Blanding 2017-6	DK			-	
<u>Spring Barley B-testing organic</u>						
27412 S	Invictus/(SJ 111998)	DK	V:Sejet/R:Sejet		7	
30432 RS	DZ 11013	DE	/R:Nordic Seed		3	

Variety code	Name/Reference	Nation	E: Title-holder V: Maintainer R: Agent	DUS	VCU	Remarks
<u>Oats A-testing</u>						
26792 RS	Galant/(SW 051020)	SE	V:SW/R:Sejet	3	8	
29101 UAF	Avanti/(SW 081212)	SE	V:SW	3	-	
31038 UAF	SW 130904	SE	V:SW	2	-	
31039 UAF	SW 131203	SE	V:SW	2	-	
31127 S	Nord 14/124	DE	V:NS-LANGENSTEIN/R:Sejet	2	2	
31128 S	SW 13D225	SE	V:Lantmännen/R:Sejet	2	2	
31916 UAF	SW 140518	SE	V:Lantmännen	1	-	
31917 UAF	SW 140520	SE	V:Lantmännen	1	-	
32023 S	NORD 15/325	DE	V:NS-LANGENSTEIN/R:Nordic Seed	1	1	
32025 S	Lion/(NORD 15/137)	DE	V:NS-LANGENSTEIN/R:Sejet	1	1	
<u>Oats B-testing</u>						
21228 RS	Dominik/(BAUB 99.8009)	DE	V:Bauer/R:N&S		14	
26720 S	Symphony/(NORD 09/128)	DE	V:NS-Böhnshausen/R:Nordic Seed		8	
27486 S	Poseidon/(NORD 09/135)	DE	V:NS-LANGENSTEIN/R:Sejet		7	
28987 RS	Seldon/(SG-K 09772)	CZ	V:Selgen/R:DLF SEEDS		-	
29639 S	Emma/(F 9211)	DE	V:Firlbeck/R:N&S		4	
30398 S	Delfin/(NORD 13/130)	DE	V:NS-LANGENSTEIN/R:Sejet		3	
32043 RS	NORD 14-314	DE	V:NS-LANGENSTEIN/R:SAATEN-UNION DK		-	
32044 RS	Armani/(BAUB 13.4007)	DE	V:Bauer/R:Sejet		-	
32045 RS	Elegant/(STH 10613)	PL	V:Hodowla/R:Nordic Seed		-	
32046 RS	Komfort/(STH 9110)	PL	V:Hodowla/R:Nordic Seed		-	
32047 RS	Albi/(MH 07 PYB 18)	FR	V:Momont/R:KWS Scandi		-	
<u>Spring Wheat A-testing</u>						
30543 UAF	WPB 08SW052-08	NL	V:Wiersum	2	-	
30544 UAF	WPB 08SW052-10	NL	V:Wiersum	2	-	
31194 UAF	SW 01278	SE	V:Lantmännen	1	-	
31908 UAF	SW 11361	SE	V:SW/R:SW	1	-	
31909 UAF	SW 21279	SE	V:SW/R:SW	1	-	
31993 UAF	WPB 10SW041-05	NL	V:Wiersum	1	-	
31994 UAF	WPB 10SW012-05	NL	V:Wiersum	1	-	
32024 S	SEC 540-09-5	DE	V:Secobra DE/R:N&S	-	1	Only VCU
32026 S	SJ B015	DK	V:Sejet/R:Sejet	1	1	
32027 S	SEC 526-07-2	DE	V:Secobra DE/R:Sejet	1	1	
32077 UAF	WPB 10sw071-13	NL	V:Wiersum	1	-	
<u>Spring Wheat B-testing</u>						
26796 RS	Dafne/(SG-S 986-06)	CZ	V:Selgen/R:DLF SEEDS		8	
26808 RS	KWS Bittern/(KWS W183)	UK	V:KWS GB/R:KWS Scandi		8	
28778 RS	KWS Willow/(CPBT W166)	UK	V:KWS GB		-	
28967 RS	WPB Skye/(LW 06SW121-01)	NL	V:Wiersum/R:Sejet		-	
29006 RS	Cornetto/(SEC431-01-9)	DE	V:Secobra DE/R:Nordic Seed		-	
29725 RS	Alondra/(SG-S 1103-08)	CZ	V:Selgen/R:Sejet		-	
30445 RS	KWS Chilham/(KWSW271)	UK	V:KWS GB/R:KWS Scandi		3	
30539 RS	Harenda/(mhr-kpj-0611)	PL	V:Malopolska/R:N&S		-	
32061 RS	SEWC132	UK	V:KWS GB/R:KWS Scandi		-	
32062 RS	KWS W330	UK	V:KWS GB/R:KWS Scandi		-	
32063 RS	KW 440-2-14	DE	V:KWS LOCHOW/R:KWS Scandi		-	

Variety code	Name/Reference	Nation	E: Title-holder V: Maintainer R: Agent	DUS	VCU	Remarks
<u>Field Pea A-testing</u>						
31031 S	PHP 16M 3-10	DE	V:PHP/R:BreedEx DK	2	2	UK
32019 S	NOS3009-052-039/1	DK	V:Nordic Seed/R:Nordic Seed	-	1	Only VCU
<u>Field Pea B-testing</u>						
28171 RS	Ingrid/(SW E 5053)	SE	V:SW/R:N&S		6	
28991 RS	Mythic/(A 6017)	DK	V:Toft/R:Sejet		-	
31173 RS	LG Aspen/(CM2301)	FR	V:LG Europe/R:Nordic Seed		2	
31174 RS	LG Auris/(CM2304)	FR	V:LG Europe/R:Sejet		2	
32050 RS	Bagoo/(MH 09 AB 14)	FR	V:Momont/R:KWS Scandi		-	
32051 RS	Manager/(MH 09 AM 26)	FR	V:Momont/R:KWS Scandi		-	
<u>Field Bean Spring A-testing</u>						
31123 S	PHP 15-8	DE	V:PHP/R:PHP	2	2	
31126 S	PHP 15-7	DE	V:PHP/R:Sejet	2	2	
31941 S	RLS 67005	DE	V:NPZ/R:NPZ DK	1	1	
31942 S	RLS 67101	DE	V:NPZ/R:NPZ DK	1	1	
<u>Field Bean Spring B-testing</u>						
23656 RS	Fuego/(NPZ 0-7680)	DE	V:NPZ/R:Holmgaard		12	
25746 S	Taifun/(NPZ 6-7530)	DE	V:NPZ/R:NPZ DK		9	
26650 S	Vertigo/(NPZ 8-7860)	DE	V:NPZ/R:NPZ DK		8	
28192 UAF	Boxer/(SW-ZG 2007)	SE	V:SW DE		5	
28927 S	Lynx/(RLS 9151)	DE	V:NPZ/R:NPZ DK		5	
30564 RS	Tiffany/(rls7428)	FR	V:Ragt FR		-	
32048 RS	Mallory/(RLS 47024)	DE	V:NPZ/R:NPZ DK		-	
32049 RS	Birgit/(HBH 13-12)	DE	V:PHP/R:Sejet		-	
<u>Winter Rape A-testing</u>						
29888 S	CWH312/(DK Pluriel)	US	V:Monsanto US/R:Monsanto DK	GK	3	
29903 S	Hameric/(MH 12AC20)	FR	V:KWS Momont/R:KWS Scandi	3	GK	
29904 S	Django/(MH 09 DJ 058)	FR	V:KWS Momont/R:KWS Scandi	3	GK	
29907 S	Pangea/(LSF14034W11)	DE	V:NPZ/R:NPZ DK	3	GK	
29910 S	Zeland/(LSF14038W11)	DE	V:NPZ/R:RAGT Nordic	3	GK	
29937 S	PX126/(13WX511C)	DE	V:Pioneer DE/R:Pioneer DE	3	GK	
29939 S	Sano/(WRH 462)	DE	V:DSV/R:DSV DK	3	GK	
29949 S	LE 14/275/(Antonius)	FR	V:LG Europe/R:Limagrain DK	3	GK	
29959 S	V 344 OL/(MDS34)	DE	V:DSV/R:DSV DK	3	GK	
30634 S	14WT135C/(PT273)	DE	V:Pioneer DE/R:Pioneer DE	2	2	
30635 S	14WT083C/(PT272)	DE	V:Pioneer DE/R:Pioneer DE	2	2	
30641 S	14WX590C/(PX128)	DE	V:Pioneer DE/R:Pioneer DE	2	2	
30642 S	14WX595C/(PX129)	DE	V:Pioneer DE/R:Pioneer DE	2	2	
30643 S	Alezzan/(HR1581536)	FR	V:Ragt FR/R:RAGT Nordic	2	2	
30646 S	HRA462/(RGT Duzzend)	FR	V:Ragt FR/R:RAGT Nordic	2	2	
30647 S	Topaze/(HRB601)	FR	V:Ragt FR/R:RAGT Nordic	2	2	
30650 S	CWH328	US	V:Monsanto US/R:Monsanto DK	2	2	
30651 S	CWH338	US	V:Monsanto US/R:Monsanto DK	2	2	
30652 S	CWH352	US	V:Monsanto US/R:Monsanto DK	2	2	
30653 S	CWH 354	US	V:Monsanto US/R:Monsanto DK	2	2	
30654 S	MDS 43	US	V:Monsanto US/R:Monsanto DK	2	2	
30655 S	V 358 OL/(MDS 38)	DE	V:DSV/R:DSV DK	2	2	
30657 S	Armani/(WRH 496)	DE	V:DSV/R:DSV DK	2	2	

Variety code	Name/Reference	Nation	E: Title-holder	DUS	VCU	Remarks
			V: Maintainer R: Agent			
30659 S	Smaragd/(WRH 506)	DE	V:DSV/R:DSV DK	2	2	
30661 S	LE15/294/(Attraction)	FR	V:LG Europe/R:Limagrain DK	2	2	
30662 S	LE15/296/(Arkansas)	FR	V:LG Europe/R:Limagrain DK	2	2	
30663 S	LE15/298/(Augusta)	FR	V:LG Europe/R:Limagrain DK	2	2	
30664 S	LE15/299/(Aspect)	FR	V:LG Europe/R:Limagrain DK	2	2	
30666 S	LE15/302/(Almanach)	FR	V:LG Europe/R:Limagrain DK	2	2	
30667 S	LE15/304/(Anker)	FR	V:LG Europe/R:Limagrain DK	2	2	
30669 S	SY Alibaba/(RNX3421)	DE	V:Syngenta DE/R:Syngenta DK	2	2	
30672 S	RNX3434/(SY Florian)	DE	V:Syngenta DE/R:Syngenta DK	2	2	
30673 S	RNX3528	DE	V:Syngenta DE/R:Syngenta DK	2	2	
30674 S	RNX3529/(SY Algo)	DE	V:Syngenta DE/R:Syngenta DK	2	2	
30702 S	Kraft/(NPZ14001W11)	DE	V:NPZ/R:NPZ DK	GK	2	
30703 S	NPZ14009W13	DE	V:MONSANTO TREBES/R:Monsanto DK	2	2	
30704 S	Lasse/(LSF14032W11)	DE	V:NPZ/R:NPZ DK	2	2	
30706 S	Ragnar/(NPZ15052W11)	DE	V:NPZ/R:NPZ DK	2	2	
30709 S	Walker/(SLM15065W11)	DE	V:NPZ/R:NPZ DK	2	2	
30711 S	MH 13J081/(Honorine)	FR	V:KWS Momont/R:KWS Scandi	2	2	
30712 S	MH 13CD076/(Hitaly)	FR	V:KWS Momont/R:KWS Scandi	2	2	
30713 S	MH 13CD085/(Horigin)	FR	V:KWS Momont/R:KWS Scandi	2	2	
30714 S	MH 13CB085/(Hillico)	FR	V:KWS Momont/R:KWS Scandi	2	2	
30715 S	MH 12AU044/(Hunic)	FR	V:KWS Momont/R:KWS Scandi	2	2	
30718 S	MH 10 DE 005/(Derrick)	FR	V:KWS Momont/R:KWS Scandi	2	2	
30720 S	MH 10 EF 156	FR	V:KWS Momont/R:KWS Scandi	2	2	
30721 S	MH 13CO080/(Halaster)	FR	V:KWS Momont/R:KWS Scandi	2	2	
31360 S	BNB078/(Turquoise)	FR	V:Ragt FR/R:RAGT Nordic	1	1	
31361 S	BNB460	FR	V:Ragt FR/R:RAGT Nordic	1	1	
31362 S	RGT Cezzara/(HR175135)	FR	V:Ragt FR/R:RAGT Nordic	1	1	
31363 S	HRD418	FR	V:Ragt FR/R:RAGT Nordic	1	1	
31364 S	MGC6499	FR	V:Maisadour/R:Sejet	1	1	
31365 S	CWH349	US	V:Monsanto US/R:Monsanto DK	1	1	
31366 S	CWH394	US	V:Monsanto US/R:Monsanto DK	1	1	
31367 S	CWH398	US	V:Monsanto US/R:Monsanto DK	1	1	
31368 S	CWH411	US	V:Monsanto US/R:Monsanto DK	1	1	
31369 S	CWH413	US	V:Monsanto US/R:Monsanto DK	1	1	
31370 S	CWH414	US	V:Monsanto US/R:Monsanto DK	1	1	
31371 S	MDS47	US	V:Monsanto US/R:Monsanto DK	1	1	
31372 S	MDS53	US	V:Monsanto US/R:Monsanto DK	1	1	
31373 S	X15WT906C	DE	V:Pioneer DE/R:Pioneer DE	1	1	
31374 S	X15WT380C	DE	V:Pioneer DE/R:Pioneer DE	1	1	
31375 S	X15WT367C	DE	V:Pioneer DE/R:Pioneer DE	1	1	
31376 S	X15WT379C	DE	V:Pioneer DE/R:Pioneer DE	1	1	
31377 S	X15WT373C	DE	V:Pioneer DE/R:Pioneer DE	1	1	
31378 S	X15WT167C	DE	V:Pioneer DE/R:Pioneer DE	1	1	
31379 S	X15WT151C	DE	V:Pioneer DE/R:Pioneer DE	1	1	
31380 UAF	X15WX448C	DE	V:Pioneer DE/R:Pioneer DE	1	-	
31381 UAF	X15WX522C	DE	V:Pioneer DE/R:Pioneer DE	1	-	
31382 UAF	X15WX438C	DE	V:Pioneer DE/R:Pioneer DE	1	-	
31383 S	V 364 OL/(MDS 44)	DE	V:DSV/R:DSV DK	1	1	
31384 S	V 366 OL/(MDS 46)	DE	V:DSV/R:DSV DK	1	1	
31385 S	WRH 521	DE	V:DSV/R:DSV DK	1	1	
31387 S	RNX3526/(SY Iowa)	DE	V:Syngenta DE/R:Syngenta DK	1	1	
31388 S	RNX3521/(SY Alix)	DE	V:Syngenta DE/R:Syngenta DK	1	1	
31389 S	RNX3527/(George)	DE	V:Syngenta DE/R:Syngenta DK	1	1	
31390 S	RNX3650	DE	V:Syngenta DE/R:Syngenta DK	1	1	

Variety code	Name/Reference	Nation	E: Title-holder V: Maintainer R: Agent	DUS	VCU	Remarks
31391 S	RNX3652	DE	V:Syngenta DE/R:Syngenta DK	1	1	
31392 S	LE15/303	FR	V:LG Europe/R:Limagrain DK	1	1	
31393 S	LE16/312	FR	V:LG Europe/R:Limagrain DK	1	1	
31394 S	LE16/316	FR	V:LG Europe/R:Limagrain DK	1	1	
31395 S	LE16/317	FR	V:LG Europe/R:Limagrain DK	1	1	
31396 S	LE16/319	FR	V:LG Europe/R:Limagrain DK	1	1	
31397 S	LE16/321	FR	V:LG Europe/R:Limagrain DK	1	1	
31398 S	WRH 534	DE	V:DSV/R:DSV DK	1	1	
31399 S	SLM15061W11/(Fossil)	DE	V:NPZ/R:NPZ DK	1	1	
31400 S	Sherman/(SLM15064W11)	DE	V:NPZ/R:NPZ DK	1	1	
31401 S	Maxwell/(SLM15070W11)	DE	V:NPZ/R:NPZ DK	1	1	
31402 S	Crome/(RAP15073W15)	DE	V:NPZ/R:NPZ DK	1	1	
31403 S	NPZ16101W15	DE	V:NPZ/R:NPZ DK	1	1	
31404 S	LSF16131W11	DE	V:NPZ/R:NPZ DK	1	1	
31405 S	Top 6	DK	V:Knold&Top/R:Knold&Top	1	1	
31409 S	MH 11 CC 057	FR	V:KWS Momont/R:KWS Scandi	1	1	
31421 S	DMH 418	DE	V:DSV/R:DSV DK	1	1	
31422 S	MH13CO085	FR	V:KWS Momont/R:KWS Scandi	1	1	
31423 S	MH 14ES101	FR	V:KWS Momont/R:KWS Scandi	1	1	
31424 S	MH 14EL120	FR	V:KWS Momont/R:KWS Scandi	1	1	
31425 S	MH 14EL118	FR	V:KWS Momont/R:KWS Scandi	1	1	
31426 S	MH 14ES124	FR	V:KWS Momont/R:KWS Scandi	1	1	

Winter Rape B-testing

26247 S	Quartz/(MH 04 AQ 015)	DE	V:Momont, A./R:KWS Scandi		8	
26257 S	SY Carlo/(RNX3825)	FR	V:Syngenta FR/R:Nordic Seed		8	
26318 RS	DK Explicit/(DMH145)	FR	V:Monsanto FR/R:Monsanto DK		8	
27678 RS	V316OL/(MDS 16)	DE	V:DSV/R:DSV DK		3	
27711 S	Mentor/(RAP 1122)	DE	V:NPZ/R:NPZ DK		6	
27739 S	Mantara/(RNX3137)	FR	V:Syngenta FR/R:Syngenta DK		6	
28380 S	Einstein/(WRH 424)	DE	V:DSV/R:DSV DK		5	
28381 S	President/(WRH 425)	DE	V:DSV/R:DSV DK		5	
28390 UAF	DK Expression/(CWH253)	US	V:Monsanto US/R:Monsanto DK		-	
28395 S	SY Alhambra/(RNX3127)	FR	V:Syngenta FR/R:Syngenta DK		5	
28412 S	Wembley/(LSF 1240)	DE	V:NPZ/R:NPZ DK		5	
28430 S	Fencer/(RG21115)	DE	V:Bayer DE/R:Bayer DK		5	
28431 S	Archimedes/(LE12/252)	FR	V:LG Europe/R:Limagrain DK		5	
29203 S	DK Exception/(DGC250)	US	V:Monsanto US/R:Monsanto DK		4	
29216 S	PT256/(X12W554C)	FR	V:Pioneer DE/R:Pioneer DE		4	
29228 S	Leopard/(LSF 1334)	DE	V:NPZ/R:NPZ DK		4	
29233 S	Penn/(LSF 1139)	DE	V:NPZ/R:Holmgaard		4	
29237 S	Trezzor/(HR158620)	FR	V:R2n/R:RAGT Nordic		4	
29243 S	Hasting/(MH 11M16)	FR	V:KWS Momont/R:KWS Scandi		4	
29257 S	Alabama/(LE 12/237)	FR	V:LG Europe/R:Limagrain DK		4	
29268 S	RG21211	DE	V:Bayer DE/R:Bayer DK		4	
29278 RS	DK Exalte/(DGC 220)	FR	V:Monsanto FR/R:Monsanto DK		4	
29886 S	CWH339/(DK Exaars)	US	V:Monsanto US/R:Monsanto DK		3	
29897 S	Halyn/(MH12AY27)	FR	V:KWS Momont/R:KWS Scandi		3	
29904 S	Django/(MH 09 DJ 058)	FR	V:KWS Momont/R:KWS Scandi		3	
29905 S	Butterfly/(MH 09 BU 006)	FR	V:KWS Momont/R:KWS Scandi		3	
29907 S	Pangea/(LSF14034W11)	DE	V:NPZ/R:NPZ DK		3	
29910 S	Zeland/(LSF14038W11)	DE	V:NPZ/R:RAGT Nordic		3	
29920 RS	DK Exentiel/(DGC234)	FR	V:Monsanto FR		-	

Variety code	Name/Reference	Nation	E: Title-holder V: Maintainer R: Agent	DUS	VCU	Remarks
29928 S	PT266/(13WT110C)	DE	V:Pioneer DE/R:Pioneer DE		3	
29938 S	Sparrow/(WRH 461)	DE	V:DSV/R:DSV DK		3	
29942 S	Dualis/(RAP 1323)	DE	V:DSV/R:DSV DK		3	
29943 S	Dariot/(DMH 294)	DE	V:DSV/R:DSV DK		3	
29948 S	Angelico/(LE 14/271)	FR	V:LG Europe/R:Limagrain DK		3	
29950 S	Architect/(LE 14/276)	FR	V:LG Europe/R:Limagrain DK		3	
29952 S	Albrecht/(LE 14/284)	FR	V:LG Europe/R:Limagrain DK		3	
29956 S	SY Annabella/(RNX3223)	DE	V:Syngenta DE/R:Syngenta DK		3	
29976 RS	DK Exclaim/(CWH 297)	FR	V:Monsanto FR/R:Monsanto DK		3	
29979 RS	Dalton/(DMH 264)	DE	V:DSV/R:Hunsballe		3	
30056 S	RGT Jakuzzi/(HR100909)	FR	V:Ragt FR/R:RAGT Nordic		3	
30679 RS	Atora/(SLM 1204)	DE	V:NPZ		-	
30722 RS	INV1030/(RG21306)	DE	V:Bayer DE/R:Bayer DK		-	
30723 RS	RG21307	DE	V:Bayer DE/R:Bayer DK		2	
30724 RS	RG21316	DE	V:Bayer DE/R:Bayer DK		2	
30725 RS	Alicante/(LE13/255)	FR	V:LG Europe		2	
30727 RS	RG21317	DE	V:Bayer DE/R:Bayer DK		2	
30885 RS	SY Florida/(RNX3233)	CH	V:Syngenta DE		-	
31411 RS	CWH344	US	V:Monsanto US/R:Monsanto DK		-	
31412 RS	CWH343	US	V:Monsanto US/R:Monsanto DK		-	
31413 RS	DK Platinum/(CWH298)	US	V:Monsanto US/R:Monsanto DK		-	
31414 RS	DK Expansion/(DMH293)	US	V:Monsanto US/R:Monsanto DK		-	
31415 RS	ESC14027	FR	V:Euralis FR/R:Nordic Seed		-	
31416 RS	Hamilton/(SLM 1307)	DE	V:NPZ/R:NPZ DK		-	
<u>Winter Rape components A-testing</u>						
26421 COM	NK Grandia/(RNX 1621)	CH		2	-	
27774 COM	Tactic/(mx1722)	DE	V:Syngenta DE/R:Syngenta DK	1	-	
29248 S	MH 08CO110	FR	V:Momont/R:KWS Scandi	1	-	
29286 COM	BM 23	DE	V:NPZ/R:NPZ DK	2	-	
29298 COM	TEC 0620	FR	V:Ragt FR/R:RAGT Nordic	4	-	
29338 COM	NW2236MC	FR	V:Pioneer DE/R:Pioneer DE	4	-	
30010 COM	MH 12AC	FR	V:KWS Momont/R:KWS Scandi	3	-	
30016 COM	EH066W11	DE	E:NPZ/V:NPZ/R:NPZ DK	3	-	
30027 COM	NW2197MC	DE	V:Pioneer DE/R:Pioneer DE	3	-	
30030 COM	NW4918FC	DE	V:Pioneer DE/R:Pioneer DE	3	-	
30036 COM	DR 67	DE	V:DSV/R:DSV DK	3	-	
30046 COM	TCR 7021	FR	V:Ragt FR/R:RAGT Nordic	3	-	
30068 COM	LR 24	DE	V:DSV/R:DSV DK	3	-	
30728 COM	NW2296MC	DE	V:Pioneer DE/R:Pioneer DE	2	-	
30732 COM	NW4929FC	DE	V:Pioneer DE/R:Pioneer DE	2	-	
30733 COM	NW4929BC	DE	V:Pioneer DE/R:Pioneer DE	2	-	
30734 COM	NW2239MC	DE	V:Pioneer DE/R:Pioneer DE	2	-	
30735 COM	NW4930FC	DE	V:Pioneer DE/R:Pioneer DE	2	-	
30736 COM	NW4930BC	DE	V:Pioneer DE/R:Pioneer DE	2	-	
30737 COM	TEC1536	FR	V:Ragt FR/R:RAGT Nordic	2	-	
30738 COM	XRR2013	FR	V:Ragt FR/R:RAGT Nordic	2	-	
30739 COM	MSL043C11	FR	V:Ragt FR/R:RAGT Nordic	2	-	
30740 COM	MSL043B11	FR	V:Ragt FR/R:RAGT Nordic	2	-	
30741 COM	MSL043A11	FR	V:Ragt FR/R:RAGT Nordic	2	-	
30742 COM	MHICO025ms	FR	V:Momont/R:KWS Scandi	2	-	
30743 COM	MH11IA221	FR	V:Momont/R:KWS Scandi	2	-	
30744 COM	MHICO025	FR	V:Momont/R:KWS Scandi	2	-	

Variety code	Name/Reference	Nation	E: Title-holder V: Maintainer R: Agent	DUS	VCU	Remarks
30745 COM	RNX5021	FR	V:Maisadour/R:Sejet	2	-	
30746 COM	RLM1666	FR	V:Maisadour/R:Sejet	2	-	
30747 COM	RNX6021	CZ	V:Maisadour/R:Sejet	2	-	
30748 COM	CS545	US	V:Monsanto US/R:Monsanto DK	2	-	
30749 COM	CB545	RO	V:Monsanto US/R:Monsanto DK	2	-	
30750 COM	CS816	US	V:Monsanto US/R:Monsanto DK	2	-	
30751 COM	CB816	US	V:Monsanto US/R:Monsanto DK	2	-	
30752 COM	CR212	US	V:Monsanto US/R:Monsanto DK	2	-	
30753 COM	CS700	US	V:Monsanto US/R:Monsanto DK	2	-	
30754 COM	CB700	US	V:Monsanto US/R:Monsanto DK	2	-	
30755 COM	SCR219	US	V:Monsanto US/R:Monsanto DK	2	-	
30756 COM	SCB 1386	DE	V:DSV/R:DSV DK	2	-	
30758 COM	WRG 1501	DE	V:DSV/R:DSV DK	2	-	
30760 COM	WRG 1507	DE	V:DSV/R:DSV DK	2	-	
30761 COM	FN09035A	FR	V:LG Europe/R:Limagrain DK	2	-	
30762 COM	MN09035A	FR	V:LG Europe/R:Limagrain DK	2	-	
30763 COM	FNIC081219A	FR	V:LG Europe/R:Limagrain DK	2	-	
30764 COM	MNIC081219A	FR	V:LG Europe/R:Limagrain DK	2	-	
30769 COM	R7946-AC	FR	V:LG Europe/R:Limagrain DK	2	-	
30771 COM	RNX5433	DE	V:Syngenta DE/R:Syngenta DK	2	-	
30772 COM	RNX6433	DE	V:Syngenta DE/R:Syngenta DK	2	-	
30773 COM	RNX5428	DE	V:Syngenta DE/R:Syngenta DK	2	-	
30774 COM	RNX6428	DE	V:Syngenta DE/R:Syngenta DK	2	-	
30775 COM	RNX7922	DE	V:Syngenta DE/R:Syngenta DK	2	-	
30777 COM	EH061W11	DE	V:NPZ/R:NPZ DK	2	-	
30778 COM	DWS 03A	DE	V:NPZ/R:NPZ DK	2	-	
30779 COM	DWS 03B	DE	V:NPZ/R:NPZ DK	2	-	
30780 COM	EH064W11	DE	V:NPZ/R:NPZ DK	2	-	
30781 COM	EM072W11	DE	V:NPZ/R:NPZ DK	2	-	
30782 COM	MSL 107 C	DE	V:NPZ/R:NPZ DK	2	-	
30783 COM	FH091W11	DE	V:NPZ/R:NPZ DK	2	-	
30784 COM	MSL 107 B	DE	V:NPZ/R:NPZ DK	2	-	
30785 COM	MSL 236C11	DE	V:NPZ/R:NPZ DK	2	-	
30786 COM	MSL 236B11	DE	V:NPZ/R:NPZ DK	2	-	
30788 COM	MH 07BO012 ms	FR	V:KWS Momont/R:KWS Scandi	2	-	
30789 COM	MH 07BO012	FR	V:KWS Momont/R:KWS Scandi	2	-	
30790 COM	MH 06RK007 ms	FR	V:KWS Momont/R:KWS Scandi	2	-	
30791 COM	MH 13CD	FR	V:KWS Momont/R:KWS Scandi	2	-	
30792 COM	MH 06RK007	FR	V:KWS Momont/R:KWS Scandi	2	-	
30793 COM	MH 07GM003 ms	FR	V:KWS Momont/R:KWS Scandi	2	-	
30794 COM	MH 07GM003	FR	V:KWS Momont/R:KWS Scandi	2	-	
30795 COM	MH 13CB	FR	V:KWS Momont/R:KWS Scandi	2	-	
30796 COM	MH 04BT046 ms	FR	V:KWS Momont/R:KWS Scandi	2	-	
30797 COM	MH 09EC134	FR	V:KWS Momont/R:KWS Scandi	2	-	
30798 COM	MH 04BT046	FR	V:KWS Momont/R:KWS Scandi	2	-	
30799 COM	MH 07BD064 ms	FR	V:KWS Momont/R:KWS Scandi	2	-	
30800 COM	MH 07BD064	FR	V:KWS Momont/R:KWS Scandi	1	-	
30801 COM	MH 13CO	FR	V:KWS Momont/R:KWS Scandi	2	-	
30802 COM	MSL 107 A	DE	V:NPZ/R:NPZ DK	2	-	
30803 COM	MSL 236A11	DE	V:NPZ/R:NPZ DK	2	-	
30804 COM	RNX4433	DE	V:Syngenta DE/R:Syngenta DK	2	-	
30805 COM	RNX4428	DE	V:Syngenta DE/R:Syngenta DK	2	-	
30806 COM	RNX4021	DE	V:Syngenta DE/R:Syngenta DK	2	-	
30821 COM	CM025W11	DE	V:NPZ/R:NPZ DK	1	-	

Variety code	Name/Reference	Nation	E: Title-holder V: Maintainer R: Agent	DUS	VCU	Remarks
31453 COM	QHC1645ms.TEC0620	FR	V:Ragt FR/R:RAGT Nordic	1	-	
31454 COM	HSN757ms.Sesame	FR	V:Ragt FR/R:RAGT Nordic	1	-	
31455 COM	S.TCC6472	FR	V:Ragt FR/R:RAGT Nordic	1	-	
31456 COM	ZH50442	FR	V:Ragt FR/R:RAGT Nordic	1	-	
31457 COM	CS565	US	V:Monsanto US/R:Monsanto DK	1	-	
31458 COM	CB565	US	V:Monsanto US/R:Monsanto DK	1	-	
31459 COM	RMMC-9686-B	FR	V:Maisadour/R:Sejet	1	-	
31460 COM	CS548	US	V:Monsanto US/R:Monsanto DK	1	-	
31461 COM	CR232	US	V:Monsanto US/R:Monsanto DK	1	-	
31462 COM	CB548	US	V:Monsanto US/R:Monsanto DK	1	-	
31463 COM	CS1255	US	V:Monsanto US/R:Monsanto DK	1	-	
31464 COM	CB1255	US	V:Monsanto US/R:Monsanto DK	1	-	
31465 COM	CS960	US	V:Monsanto US/R:Monsanto DK	1	-	
31466 COM	CB960	US	V:Monsanto US/R:Monsanto DK	1	-	
31467 COM	CS694	US	V:Monsanto US/R:Monsanto DK	1	-	
31468 COM	CB694	US	V:Monsanto US/R:Monsanto DK	1	-	
31469 COM	CS729	US	V:Monsanto US/R:Monsanto DK	1	-	
31470 COM	CB729	US	V:Monsanto US/R:Monsanto DK	1	-	
31471 COM	CMS4896	US	V:Monsanto US/R:Monsanto DK	1	-	
31472 COM	CB4896	US	V:Monsanto US/R:Monsanto DK	1	-	
31473 COM	SCS1151	US	V:Monsanto US/R:Monsanto DK	1	-	
31474 COM	SCB1151	US	V:Monsanto US/R:Monsanto DK	1	-	
31475 COM	4PBYZ67A	DE	V:Pioneer DE/R:Pioneer DE	1	-	
31476 COM	4PBYZ67B	DE	V:Pioneer DE/R:Pioneer DE	1	-	
31477 COM	RNX8650	DE	V:Pioneer DE/R:Pioneer DE	1	-	
31478 COM	RNX7650	DE	V:Pioneer DE/R:Pioneer DE	1	-	
31479 COM	ESF2024cms	DE	V:Pioneer DE/R:Pioneer DE	1	-	
31480 COM	ESF2024	DE	V:Pioneer DE/R:Pioneer DE	1	-	
31481 COM	4PFRC38A	DE	V:Pioneer DE/R:Pioneer DE	1	-	
31482 COM	4PFRC38B	DE	V:Pioneer DE/R:Pioneer DE	1	-	
31483 COM	4PAGS14R	DE	V:Pioneer DE/R:Pioneer DE	1	-	
31484 COM	4PHQW29R	DE	V:Pioneer DE/R:Pioneer DE	1	-	
31485 COM	LS 7153	DE	V:DSV/R:DSV DK	1	-	
31486 COM	LR 25	DE	V:DSV/R:DSV DK	1	-	
31487 COM	LB 7153	DE	V:DSV/R:DSV DK	1	-	
31488 COM	DS 2586	DE	V:DSV/R:DSV DK	1	-	
31489 COM	DR 69	DE	V:DSV/R:DSV DK	1	-	
31490 COM	RNX8233	DE	V:Syngenta DE/R:Syngenta DK	1	-	
31491 COM	RNX5524	DE	V:Syngenta DE/R:Syngenta DK	1	-	
31492 COM	RNX6524	DE	V:Syngenta DE/R:Syngenta DK	1	-	
31493 COM	RNX7652	DE	V:Syngenta DE/R:Syngenta DK	1	-	
31494 COM	R7704-BD	FR	V:LG Europe/R:Limagrain DK	1	-	
31495 COM	FOCTD997	FR	V:LG Europe/R:Limagrain DK	1	-	
31496 COM	FD12005	FR	V:LG Europe/R:Limagrain DK	1	-	
31497 COM	MD12005	FR	V:LG Europe/R:Limagrain DK	1	-	
31498 COM	FD12008	FR	V:LG Europe/R:Limagrain DK	1	-	
31499 COM	MD12008	FR	V:LG Europe/R:Limagrain DK	1	-	
31500 COM	MSL 310 C	DE	V:DSV/R:DSV DK	1	-	
31501 COM	Elgar	DE	V:DSV/R:DSV DK	1	-	
31502 COM	MSL 310 B	DE	V:DSV/R:DSV DK	1	-	
31503 COM	DM021W11	DE	V:NPZ/R:NPZ DK	1	-	
31504 COM	FH094W15	DE	V:NPZ/R:NPZ DK	1	-	
31505 COM	GH111W11	DE	V:NPZ/R:NPZ DK	1	-	
31506 COM	MH 08FL017ms	FR	V:KWS Momont/R:KWS Scandi	1	-	

Variety code	Name/Reference	Nation	E: Title-holder V: Maintainer R: Agent	DUS	VCU	Remarks
31507 COM	MH 10GN011	FR	V:KWS Momont/R:KWS Scandi	1	-	
31508 COM	MH 08FL017	FR	V:KWS Momont/R:KWS Scandi	1	-	
31509 COM	MH 08DN097 ms	FR	V:KWS Momont/R:KWS Scandi	1	-	
31510 COM	MH 09EX092	FR	V:KWS Momont/R:KWS Scandi	1	-	
31511 COM	MH 08DN097	FR	V:KWS Momont/R:KWS Scandi	1	-	
31512 COM	MH 08CO110 ms	FR	V:KWS Momont/R:KWS Scandi	1	-	
31513 COM	MH 08EG110ms	FR	V:KWS Momont/R:KWS Scandi	1	-	
31514 COM	MH 08EG110	FR	V:KWS Momont/R:KWS Scandi	1	-	
31515 COM	RNX4524	DE	V:Syngenta DE/R:Syngenta DK	1	-	
31516 COM	MSL 310 A	DE	V:DSV/R:DSV DK	1	-	
31517 COM	MSL 014 A	DE	V:NPZ/R:NPZ DK	1	-	
31518 UAF	4PCPH35R	DE	V:Pioneer DE/R:Pioneer DE	1	-	
31519 UAF	4PJDB48A	DE	V:Pioneer DE/R:Pioneer DE	1	-	
31520 UAF	4PJDB48B	DE	V:Pioneer DE/R:Pioneer DE	1	-	
31533 UAF	4PHYK02A	DE	V:Pioneer DE/R:Pioneer DE	1	-	
31534 UAF	4PHYK02B	DE	V:Pioneer DE/R:Pioneer DE	1	-	
31546 COM	TCC6397	FR	V:Ragt FR/R:RAGT Nordic	1	-	
31551 COM	HSN757ms	FR	V:Ragt FR/R:RAGT Nordic	1	-	
31552 UAF	NW4755FC	DE	V:Pioneer DE/R:Pioneer DE	1	-	
31553 UAF	NW4755BC	DE	V:Pioneer DE/R:Pioneer DE	1	-	

Spring Rape A-testing

31013 S	DLE16804S11/(Lancia)	DE	V:NPZ/R:NPZ DK	2	2	
31014 S	DLE16805S11/(Lagonda)	DE	V:NPZ/R:NPZ DK	2	2	
31015 UAF	DLE16806S21/(Ciclus CL)	DE	V:NPZ/R:NPZ DK	2	-	
31016 UAF	DLE16807S21/(Cebra CL)	DE	V:NPZ/R:NPZ DK	2	-	
31017 UAF	DLE16808S21/(Contra CL)	DE	V:NPZ/R:NPZ DK	2	-	
31068 S	DS101CL/(CL2537387H)	DE	V:Dow Agro DE/R:Dow Agro DE	2	2	
31074 UAF	SW W2897/(Gondor)	SE	V:Lantmännen	2	-	
31075 UAF	SW W2898	SE	V:Lantmännen	2	-	
31877 UAF	DLE17809S21	DE	V:NPZ/R:NPZ DK	1	-	
31878 UAF	DLE17810S21	DE	V:NPZ/R:NPZ DK	1	-	
31879 UAF	DLE17811S21	DE	V:NPZ/R:NPZ DK	1	-	
31881 S	NCH14C047/(NCH14C047)	UK	V:NUSEED/R:NUSEED	1	1	
31937 S	CL2562966H	DE	V:Dow Agro DE/R:Dow Agro DE	1	1	
31939 S	CL2562968H	DE	V:Dow Agro DE/R:Dow Agro DE	1	1	
32065 UAF	SW X2902	SE	V:Lantmännen	1	-	

Spring Rape components A-testing

30270 COM	FH802S21	DE	V:NPZ/R:NPZ DK	3	-	
31018 COM	CMS502A11	DE	V:NPZ/R:NPZ DK	2	-	
31019 COM	FMT502B11	DE	V:NPZ/R:NPZ DK	2	-	
31020 COM	GH804S21	DE	V:NPZ/R:NPZ DK	2	-	
31021 COM	MSL608A21	DE	V:NPZ/R:NPZ DK	2	-	
31022 COM	MSL608B21	DE	V:NPZ/R:NPZ DK	2	-	
31023 COM	MSL608C21	DE	V:NPZ/R:NPZ DK	2	-	
31024 COM	GH805S21	DE	V:NPZ/R:NPZ DK	2	-	
31069 COM	CL1992625A	DE	V:Dow Agro DE/R:Dow Agro DE	2	-	
31070 COM	CL215695R	DE	V:Dow Agro DE/R:Dow Agro DE	2	-	
31076 COM	SW 0928727A	SE	V:Lantmännen	2	-	
31077 COM	SW 0928727B	SE	V:Lantmännen	2	-	
31078 COM	SW 1529056R	SE	V:Lantmännen	2	-	
31079 COM	SW 1529059R	SE	V:Lantmännen	2	-	

Variety code	Name/Reference	Nation	E: Title-holder V: Maintainer R: Agent	DUS	VCU	Remarks
31080 COM	CL1992625B	DE	V:Dow Agro DE/R:Dow Agro DE	2	-	
31899 COM	CMS503a21	DE	V:NPZ/R:NPZ DK	1	-	
31900 COM	R502S21	DE	V:NPZ/R:NPZ DK	1	-	
31901 COM	FMT503B21	DE	V:NPZ/R:NPZ DK	1	-	
31902 COM	CMS504A21	DE	V:NPZ/R:NPZ DK	1	-	
31903 COM	FMT504B21	DE		1	-	
31904 COM	CMS505A21	DE	V:NPZ/R:NPZ DK	1	-	
31905 COM	R503S21	DE	V:NPZ/R:NPZ DK	1	-	
31906 COM	FMT505B21	DE	V:NPZ/R:NPZ DK	1	-	
31938 COM	CL192355R	DE	V:Dow Agro DE/R:Dow Agro DE	1	-	
31940 COM	CL134904R	DE	V:Dow Agro DE/R:Dow Agro DE	1	-	
32112 COM	ND0003A	UK	V:NUSEED/R:NUSEED	1	-	
32113 COM	10C3478	UK	V:NUSEED/R:NUSEED	1	-	
32114 COM	ND0003B	UK	V:NUSEED/R:NUSEED	1	-	
<u>Potato A-testing</u>						
31032 S	ERO-25	DK	V:Vandel/R:Vandel	2	2	NL
31033 S	LUS-19	DK	V:Vandel/R:Vandel	2	2	NL
31034 S	LHI-3	DK	V:Vandel/R:Vandel	2	2	NL
<u>Potato – industrial production A-testing</u>						
31035 S	LZK-1	DK	V:Vandel/R:Vandel	2	2	NL
31601 S	Aurion 17/(Aurion 17)	DK	V:Danespo/R:Danespo	1		NL
31602 S	Ascott 97/(Ascott 97)	DK	V:Danespo/R:Danespo	1		NL
<u>Suger Beet A-testing</u>						
30335 S	Farina KWS/(5K562)	DE	V:KWS/R:KWS Scandi	3	GK	
30389 S	Mustang/(HI1438)	CH	V:Syngenta CH/R:Syngenta DK	3	GK	
31056 S	6K649/(Celesta KWS)	DE	V:KWS/R:KWS Scandi	2	2	
31057 S	6K657	DE	V:KWS/R:KWS Scandi	2	2	
31058 S	6K660	DE	V:KWS/R:KWS Scandi	2	2	
31061 S	6K670/(Smart Janninka KWS)	DE	V:KWS/R:KWS Scandi	2	2	
31062 S	6K674/(Smart Johanna KWS)	DE	V:KWS/R:KWS Scandi	2	2	
31063 S	6K680/(Fenja KWS)	DE	V:KWS/R:KWS Scandi	2	2	
31064 S	6K683	DE	V:KWS/R:KWS Scandi	2	2	
31067 S	6K697/(Coletta KWS)	DE	V:KWS/R:KWS Scandi	2	2	
31082 S	SV1722	BE	V:SES/R:Sesvdh DK	2	2	
31083 S	SV1723	BE	V:SES/R:Sesvdh DK	2	2	
31084 S	SV1740	BE	V:SES/R:Sesvdh DK	2	2	
31087 S	SV1758	BE	V:SES/R:Sesvdh DK	2	2	
31088 S	SV1765	BE	V:SES/R:Sesvdh DK	2	2	
31090 S	SV1800	BE	V:SES/R:Sesvdh DK	2	2	
31115 S	ST12651	DE	V:Strube/R:Strube	2	2	
31117 S	ST12664	DE	V:Strube/R:Strube	2	2	
31118 S	ST12668	DE	V:Strube/R:Strube	2	2	
31119 S	ST15616	DE	V:Strube/R:Strube	2	2	
31130 S	HI 1426	SE	V:Syngenta SE/R:Syngenta DK	2	2	
31131 S	HI 1469	SE	V:Syngenta SE/R:Syngenta DK	2	2	
31141 S	MA2210	DK	V:Maribo/R:Maribo	2	2	
31143 S	MA2213	DK	V:Maribo/R:Maribo	2	2	
31144 S	MA4069	DK	V:Maribo/R:Maribo	2	2	
31147 S	MA4075	DK	V:Maribo/R:Maribo	2	2	
31943 S	7K728	DE	V:KWS/R:KWS Scandi	1	1	

Variety code	Name/Reference	Nation	E: Title-holder V: Maintainer R: Agent	DUS	VCU	Remarks
31944 S	7K731	DE	V:KWS/R:KWS Scandi	1	1	
31945 S	7K735	DE	V:KWS/R:KWS Scandi	1	1	
31946 S	7K742	DE	V:KWS/R:KWS Scandi	1	1	
31947 S	7K755	DE	V:KWS/R:KWS Scandi	1	1	
31948 S	7K757	DE	V:KWS/R:KWS Scandi	1	1	
31949 S	7K758	DK	V:KWS/R:KWS Scandi	1	1	
31950 S	7K759	DE	V:KWS/R:KWS Scandi	1	1	
31951 S	7K760	DE	V:KWS/R:KWS Scandi	1	1	
31952 S	7K771	DE	V:KWS/R:KWS Scandi	1	1	
31953 S	7K780	DE	V:KWS/R:KWS Scandi	1	1	
31954 S	7K781	DE	V:KWS/R:KWS Scandi	1	1	
31969 S	ST12705	DE	V:Strube Research/R:Strube Research	1	1	
31970 S	ST12729	DE	V:Strube Research/R:Strube Research	1	1	
31971 S	ST12764	DE	V:Strube Research/R:Strube Research	1	1	
31972 S	ST12782	DE	V:Strube Research/R:Strube Research	1	1	
31973 S	ST12791	DE	V:Strube Research/R:Strube Research	1	1	
31974 S	ST12792	DE	V:Strube Research/R:Strube Research	1	1	
31975 S	ST15712	DE	V:Strube Research/R:Strube Research	1	1	
31976 S	ST15713	DE	V:Strube Research/R:Strube Research	1	1	
31977 S	ST15727	DE	V:Strube Research/R:Strube Research	1	1	
31978 S	ST15775	DE	V:Strube Research/R:Strube Research	1	1	
31983 S	SV1967	BE	V:SES/R:Sesvdh DK	1	1	
31984 S	SV1968	BE	V:SES/R:Sesvdh DK	1	1	
31985 S	SV1969	BE	V:SES/R:Sesvdh DK	1	1	
31986 S	SV1970	BE	V:SES/R:Sesvdh DK	1	1	
31987 S	SV1971	BE	V:SES/R:Sesvdh DK	1	1	
31988 S	SV1972	BE	V:SES/R:Sesvdh DK	1	1	
31989 S	SV1973	BE	V:SES/R:Sesvdh DK	1	1	
31990 S	SV1974	BE	V:SES/R:Sesvdh DK	1	1	
31991 S	SV1975	BE	V:SES/R:Sesvdh DK	1	1	
31992 S	SV1976	BE	V:SES/R:Sesvdh DK	1	1	
31996 S	HI1471	CH	V:Syngenta CH/R:Syngenta DK	1	1	
31997 S	HI1483	CH	V:Syngenta CH/R:Syngenta DK	1	1	
31998 S	HI1492	CH	V:Syngenta CH/R:Syngenta DK	1	1	
31999 S	HI1518	CH	V:Syngenta CH/R:Syngenta DK	1	1	
32000 S	MA2221	DK	V:Maribo/R:Maribo	1	1	
32001 S	MA2225	DK	V:Maribo/R:Maribo	1	1	
32002 S	MA2227	DK	V:Maribo/R:Maribo	1	1	
32003 S	MA2228	DK	V:Maribo/R:Maribo	1	1	
32004 S	MA4086	DK	V:Maribo/R:Maribo	1	1	
32005 S	MA4087	DK	V:Maribo/R:Maribo	1	1	
32006 S	MA4088	DK	V:Maribo/R:Maribo	1	1	
32007 S	MA4090	DK	V:Maribo/R:Maribo	1	1	
32097 S	5K559	DE	V:KWS/R:KWS Scandi	3	1	
32098 S	5K588	DE	V:KWS/R:KWS Scandi	3	1	
<u>Suger Beet B-testing</u>						
20075 S	Annalena/(2S36)	DE	V:KWS/R:DLF-Trifolium		16	
24778 S	Jaquelina/(7R70)	DE	V:KWS/R:KWS Scandi		10	
24800 S	Pasteur/(SD 12827)	DE	V:Strube/R:Strube		10	
25764 S	Criollo/(SR-426)	BE	V:SESvdH/R:Sesvdh DK		9	
26774 S	Barents/(ST 12023)	DE	V:Strube/R:Strube		8	
27451 S	Jollina KWS/(1K218)	DE	V:KWS/R:KWS Scandi		7	

Variety code	Name/Reference	Nation	E: Title-holder V: Maintainer R: Agent	DUS	VCU	Remarks
27474 S	Lombok/(SN-515)	BE	V:SES/R:Sesvdh DK		7	
28094 S	Fairway/(MA2092)	DK	V:Maribo/R:Maribo		6	
28095 S	Flexness/(MA2096)	DK	V:Maribo/R:Maribo		6	
28863 S	Cantona KWS/(3K394)	DE	V:KWS/R:KWS Scandi		5	
28932 S	Starling/(SR-842)	BE	V:SES/R:Sesvdh DK		5	
28933 S	Vertigo/(SR-843)	BE	V:SES/R:Sesvdh DK		5	
29591 S	Ragna KWS/(3K392)	DE	V:KWS/R:KWS Scandi		4	
29592 S	Daphna/(3K393)	DE	V:KWS/R:KWS Scandi		4	
29593 S	Smilla KWS/(4K444)	DE	V:KWS/R:KWS Scandi		4	
29662 S	Degas/(ST 12404)	DE	V:Strube/R:Strube		4	
29664 S	Klimt/(ST 12422)	DE	V:Strube/R:Strube		4	
29745 RS	Tadorne/(FD 0830)	FR	V:FD		-	
30335 S	Farina KWS/(5K562)	DE	V:KWS/R:KWS Scandi		3	
30338 S	Selma KWS/(5K576)	DE	V:KWS/R:KWS Scandi		3	
30341 S	Einar/(ST 12522)	DE	V:Strube/R:Strube		3	
30347 S	Bazin/(St 15507)	DE	V:Strube/R:Strube		3	
30350 S	Thorsen/(ST 15532)	DE	V:Strube/R:Strube		3	
30354 S	Jura/(SV1633)	BE	V:SES/R:Sesvdh DK		3	
30355 S	Whisky/(SV1656)	BE	V:SES/R:Sesvdh DK		3	
30389 S	Mustang/(HI1438)	CH	V:Syngenta CH/R:Syngenta DK		3	
30413 S	Davinci/(MA2194)	DK	V:Maribo/R:Maribo		3	
30416 S	Joker/(MA4059)	DK	V:Maribo/R:Maribo		3	

Fodder Beet A-testing

31914 UAF	Bv2016HY01	NL	V:Joordens	1	-	
31915 UAF	Bv2016Hy02	NL	V:Joordens	1	-	
31967 S	DM 1774	DK	V:DLF SEEDS/R:DLF SEEDS	1	1	
31968 S	DM 1775	DK	V:DLF SEEDS/R:DLF SEEDS	1	1	

Fodder Beet B-testing

26750 S	Bangor/(DM 750-8055)	DK	V:DLF SEEDS/R:DLF SEEDS		8	
---------	----------------------	----	-------------------------	--	---	--

Beets for Energy production A-testing

30326 S	Eloquenta KWS/(5E945)	DE	V:KWS/R:KWS Scandi	3	GK	
31054 S	6E949/(Pierina KWS)	DE	V:KWS/R:KWS Scandi	2	2	
31055 S	6E950/(Myrilla KWS)	DE	V:KWS/R:KWS Scandi	2	2	
31979 S	ST247111	DE	V:Strube Research/R:Strube Research	1	1	
31980 S	ST247112	DE	V:Strube Research/R:Strube Research	1	1	
31981 S	ST247113	DE	V:Strube Research/R:Strube Research	1	1	
31982 S	ST247114	DE	V:Strube Research/R:Strube Research	1	1	

Beets for Energy production B-testing

24778 S	Jaquelina/(7R70)	DE	V:KWS/R:KWS Scandi		-	
24800 S	Pasteur/(SD 12827)	DE	V:Strube/R:Strube		-	
26750 S	Bangor/(DM 750-8055)	DK	V:DLF SEEDS/R:DLF SEEDS		-	
26751 S	Enermax/(DM 750-8058)	DK	V:DLF SEEDS/R:DLF SEEDS		8	
26774 S	Barents/(ST 12023)	DE	V:Strube/R:Strube		-	
27463 S	Cindy KWS/(1B928)	DE	V:KWS/R:KWS Scandi		7	
28094 S	Fairway/(MA2092)	DK	V:Maribo/R:Maribo		-	
28095 S	Flexness/(MA2096)	DK	V:Maribo/R:Maribo		-	
28102 S	Bergman/(MA6002)	DK	V:Maribo/R:Maribo		6	
28856 S	Linova KWS/(3B938)	DE	V:KWS/R:KWS Scandi		5	

Variety code	Name/Reference	Nation	E: Title-holder V: Maintainer R: Agent	DUS	VCU	Remarks
28883 S	Acker/(ST 24303)	DE	V:Strube/R:Strube		5	
28933 S	Vertigo/(SR-843)	BE	V:SES/R:Sesvdh DK		2	
29607 S	Ulrika KWS/(4B941)	DE	V:KWS/R:KWS Scandi		4	
29608 S	Tarmina KWS/(4B942)	DE	V:KWS/R:KWS Scandi		4	
29638 S	Bardot/(MA6005)	DK	V:Maribo/R:Maribo		4	
29650 S	Florie/(FD14F9002)	FR	V:FD/R:FD		4	
29677 S	Yoda/(ST 24445)	DE	V:Strube/R:Strube		4	
29679 S	Alfred/(ST 24434)	DE	V:Strube/R:Strube		4	
30326 S	Eloquenta KWS/(5E945)	DE	V:KWS/R:KWS Scandi		3	
30328 S	Baridana KWS/(5E947)	DE	V:KWS/R:KWS Scandi		3	
30361 RS	Bison/(SN-80)	BE	V:SES/R:Sesvdh DK		3	
30369 S	Walter/(ST 24532)	DE	V:Strube/R:Strube		3	
30471 RS	Tarine/(FD 13 FR 031)	FR	V:FD/R:Limagrain DK		-	

Silage Maize A-testing

31036 S	RH16001	FR	V:Ragt FR/R:RAGT Nordic	2	2	FR
31093 S	EQ 3048	US	V:Monsanto US/R:Monsanto DK	GK	2	DE
31110 S	SA0025	FR	V:Syngenta FR/R:Syngenta DK	2	2	DE
31111 S	SA0045	FR	V:Syngenta FR/R:Syngenta DK	2	2	DE
31124 S	LZM166/85	FR	V:LG Europe/R:Limagrain DK	GK	2	FR
31125 S	LZM166/86	FR	V:LG Europe/R:Limagrain DK	GK	2	FR
31186 S	Avitus KWS/(KXB5007)	DE	V:KWS/R:KWS Scandi	GK	2	FR
31187 S	KXB5013	DE	V:KWS/R:KWS Scandi	GK	2	FR
31188 S	KXB6004	DE	V:KWS/R:KWS Scandi	GK	2	FR
31190 S	KXB6007	DE	V:KWS/R:KWS Scandi	1	2	FR
31912 S	RH17002	FR	V:Ragt FR/R:RAGT Nordic	1	1	FR
31913 S	RH17003	FR	V:Ragt FR/R:RAGT Nordic	1	1	FR
31965 S	SA0746	FR	V:Syngenta FR/R:Syngenta DK	1	1	DE
31966 S	SA0776	FR	V:Syngenta FR/R:Syngenta DK	1	1	PL
31995 S	ER 2601	US	V:Monsanto US/R:Monsanto DK	-	1	Only VCU
32008 S	LZM167/85	FR	V:LG Europe/R:Limagrain DK	1	1	FR
32009 S	KXB7001	DE	V:KWS/R:KWS Scandi	1	1	DE
32010 S	KXB7002	DE	V:KWS/R:KWS Scandi	1	1	DE
32011 S	KXB7004	DE	V:KWS/R:KWS Scandi	1	1	DE
32012 S	KXB7005	DE	V:KWS/R:KWS Scandi	1	1	DE
32013 S	KXB7007	DE	V:KWS/R:KWS Scandi	1	1	DE
32014 S	KXB7009	DE	V:KWS/R:KWS Scandi	1	1	DE
32015 S	KXB7010	DE	V:KWS/R:KWS Scandi	1	1	DE
32016 S	KXB7012	DE	V:KWS/R:KWS Scandi	1	1	DE
32017 S	KXB7013	DE	V:KWS/R:KWS Scandi	1	1	DE
32018 S	KXB7015	DE	V:KWS/R:KWS Scandi	1	1	DE
32037 S	DSP46132	ES	V:SEMILLAS ES/R:Nordic Seed	-	1	Only VCU

Silage Maize B-testing

24093 RS	Atrium/(LZM 156/75)	NL	V:LG Europe/R:Limagrain DK		11	
24789 S	Chavoxx/(RH0729)	FR	V:Ragt FR/R:Sejet		10	
25741 S	Activate/(LZM159/85)	FR	V:LG Europe/R:Limagrain DK		9	
25980 RS	Amagrano/(KXA 8113)	DE	V:KWS/R:KWS Scandi		9	
25984 RS	LG30211/(LZM 158/72)	NL	V:LG Europe/R:Limagrain DK		9	
26691 S	Emblem/(LZM160/81)	FR	V:LG Europe/R:Limagrain DK		8	
26852 RS	Ambition/(LZM 159/87)	FR	V:LG Europe/R:Limagrain DK		8	
27557 RS	Fieldstar/(LZM 160/86)	NL	V:LG Europe/R:Limagrain DK		7	
28087 S	RGT Sharxx/(RH12005)	FR	V:Ragt FR/R:Sejet		6	

Variety code	Name/Reference	Nation	E: Title-holder		DUS	VCU	Remarks
			V: Maintainer	R: Agent			
28089 S	Absalon/(LZM162/84)	FR	V:LG Europe/R:Limagrain	DK		6	
28092 S	LG30209/(LZM162/71)	FR	V:LG Europe/R:Limagrain	DK		6	
28151 S	Kainoas/(KXB1009)	DE	V:KWS/R:KWS Scandi			6	
28164 S	Farmplus/(SM B0200)	DE	V:Moreau/R:Farmsaat			6	
28218 RS	Glory/(LZM 160/85)	FR	V:LG Europe/R:Limagrain	DK		6	
28219 RS	Asgaard/(LZM 161/85)	FR	V:LG Europe/R:Limagrain	DK		6	
28225 RS	DKC3333/(EL 3442)	US	V:Monsanto US/R:Monsanto	DK		6	
28227 RS	Exxtens/(RH11013)	FR	V:Ragt FR/R:Sejet			6	
28235 RS	Sunlite/(LZM 161/82)	FR	V:LG Europe/R:Limagrain	DK		6	
28237 RS	Sergio KWS/(KXB1011)	DE	V:KWS/R:KWS Scandi			6	
28822 S	RGT Oxxgood/(RH13001)	FR	V:Ragt FR/R:Nordic Seed			5	
28872 S	SY Nordicstar/(SA0022)	DE	V:Syngenta FR/R:Syngenta	DK		5	
28961 S	Rubiera KWS/(KXB2016)	DE	V:KWS/R:KWS Scandi			5	
29068 RS	Augustus KWS/(KXB2014)	DE	V:KWS/R:KWS Scandi			-	
29069 RS	Martinez KWS/(KXB2022)	DE	V:KWS/R:KWS Scandi			5	
29071 RS	Kompetens/(KXB2007)	DE	V:KWS/R:KWS Scandi			-	
29072 RS	Emmerson/(LZM 162/81)	FR	V:LG Europe/R:Limagrain	DK		-	
29081 RS	SY Milkytop/(SA0730)	CH	V:Syngenta CH/R:Sejet			-	
29610 S	Wizard/(LZM164/83)	FR	V:LG Europe/R:Limagrain	DK		4	
29612 S	Autens KWS/(KXB4001)	DE	V:KWS/R:KWS Scandi			4	
29613 S	Edgard KWS/(KXB4003)	DE	V:KWS/R:KWS Scandi			4	
29706 RS	LG31218/(LZM 163/73)	FR	V:LG Europe/R:Limagrain	DK		-	
29707 RS	LG31211/(LZM 163/74)	FR	V:LG Europe/R:Limagrain	DK		-	
29708 RS	Reason/(LZM 163/81)	FR	V:LG Europe/R:Limagrain	DK		-	
30323 S	RGT Stewaxx/(RH15002)	FR	V:Ragt FR/R:Sejet			3	
30366 S	SY Skandik/(SA0813)	FR	V:Syngenta FR/R:Syngenta	DK		3	
30384 S	Ability/(LZM165/85)	FR	V:LG Europe/R:Limagrain	DK		3	
30424 RS	Gatsby/(LZM164/84)	FR	V:LG Europe/R:Limagrain	DK		3	
30451 S	KXB5009/(Madonias)	DE	V:KWS/R:KWS Scandi			3	
30452 S	Likeit/(KXB5010)	DE	V:KWS/R:KWS Scandi			3	
31186 S	Avitus KWS/(KXB5007)	DE	V:KWS/R:KWS Scandi			2	
31201 RS	SY Rotango/(SA1062)	DE	V:Syngenta DE			2	
31203 RS	SY Karthoun/(SA0472)	CH	V:Syngenta CH/R:Syngenta	DK		2	
31205 RS	Pinnacle/(LZM 165/83)	FR	V:LG Europe/R:Limagrain	DK		2	
31217 RS	Belami CS/(CSM 1168 / SB0502)	FR	V:Caussade/R:Nordic Seed			2	
32078 RS	LZM166/82	FR	V:LG Europe/R:Limagrain	DK		-	
32079 RS	LZM165/71	FR	V:LG Europe/R:Limagrain	DK		-	
32080 RS	LZM166/71	FR	V:LG Europe/R:Limagrain	DK		-	
32081 RS	Amanova/(KXB5127)	DE	V:KWS/R:KWS Scandi			-	
32082 RS	Kaprillas/(KXB5305)	DE	V:KWS/R:KWS Scandi			-	
32083 RS	KXB6125	DE	V:KWS/R:KWS Scandi			-	
32084 RS	KXB6126	DE	V:KWS/R:KWS Scandi			-	
32085 RS	KXB6303	DE	V:KWS/R:KWS Scandi			-	
32086 RS	SL12012	AT	V:Linz/R:Nordic Seed			-	
32087 RS	Agnan/(CSM 2159)	FR	V:Caussade/R:Nordic Seed			-	
32088 RS	MGM273807/(Mas 08.F)	FR	V:Maisadour/R:Sejet			-	
32089 RS	RGT Duxxbury/(RH15007)	FR	V:Ragt FR/R:RAGT Nordic			-	
32091 RS	Keops/(KXB 4124)	DE	V:KWS/R:KWS Scandi			-	
32092 RS	KXB6036	DE	V:KWS/R:KWS Scandi			-	
32093 RS	Landlord/(SM D0116)	DE	V:Moreau			-	
32094 RS	Marcamo/(SL14256)	AT	V:Linz			-	
32115 RS	ESZ6106	FR	V:Euralis FR/R:Nordic Seed			-	

Variety code	Name/Reference	Nation	E: Title-holder V: Maintainer R: Agent	DUS	VCU	Remarks
<u>Maize whole grain A-testing</u>						
31081 S	SM E0290/(Farmikolai)	DE	V:Moreau/R:Moreau	GK	2	PL
<u>Maize whole grain B-besting</u>						
25741 S	Activate/(LZM159/85)	FR	V:LG Europe/R:Limagrain DK		7	
25980 RS	Amagrano/(KXA 8113)	DE	V:KWS/R:KWS Scandi		7	
26691 S	Emblem/(LZM160/81)	FR	V:LG Europe/R:Limagrain DK		7	
26852 RS	Ambition/(LZM 159/87)	FR	V:LG Europe/R:Limagrain DK		8	
27557 RS	Fieldstar/(LZM 160/86)	NL	V:LG Europe/R:Limagrain DK		-	
28151 S	Kainoas/(KXB1009)	DE	V:KWS/R:KWS Scandi		3	
28218 RS	Glory/(LZM 160/85)	FR	V:LG Europe/R:Limagrain DK		6	
28219 RS	Asgaard/(LZM 161/85)	FR	V:LG Europe/R:Limagrain DK		6	
28235 RS	Sunlite/(LZM 161/82)	FR	V:LG Europe/R:Limagrain DK		-	
28237 RS	Sergio KWS/(KXB1011)	DE	V:KWS/R:KWS Scandi		-	
29069 RS	Martinez KWS/(KXB2022)	DE	V:KWS/R:KWS Scandi		3	
29071 RS	Kompetens/(KXB2007)	DE	V:KWS/R:KWS Scandi		3	
30382 S	LG30179/(LZM164/80)	FR	V:LG Europe/R:Limagrain DK		3	
30424 RS	Gatsby/(LZM164/84)	FR	V:LG Europe/R:Limagrain DK		3	
31081 S	SM E0290/(Farmikolai)	DE	V:Moreau/R:Moreau		2	
31197 RS	Megusto KWS/(KXB4007)	DE	V:KWS/R:KWS Scandi		2	
31198 RS	KWS Stabil/(KXB2101)	DE	V:KWS/R:KWS Scandi		2	
<u>Perennial Ryegrass, Fodder A-testing</u>						
28980 S	Saqui/(DLF LFD-9252)	DK	V:DLF SEEDS/R:DLF SEEDS	5	GK	DE
29682 S	Praetorian/(DLF LFD-62846)	DK	V:DLF SEEDS/R:DLF SEEDS	GK	3	UK
29683 S	DLF LFD-62533/(Sitala)	DK	V:DLF SEEDS/R:DLF SEEDS	3	3	DE
29684 S	LMG LFD-62694/(Scotia)	DK	V:DLF SEEDS/R:DLF SEEDS	3	3	UK
29685 S	Redding/(DLF LFD-21427)	DK	V:DLF SEEDS/R:DLF SEEDS	3	3	UK
29686 S	DLF LFT-44446/(Tiponi)	DK	V:DLF SEEDS/R:DLF SEEDS	GK	3	DE
29687 S	DLF LFT-41350/(Soyala)	DK	V:DLF SEEDS/R:DLF SEEDS	3	3	DE
29689 S	Sweety/(DLF FAF-139)	DK	V:DLF SEEDS/R:DLF SEEDS	3	3	FR
30459 S	DLF FLD-62840	DK	V:DLF SEEDS/R:DLF SEEDS	GK	2	DE
30460 S	Evocative/(DLF LFD-62699)	DK	V:DLF SEEDS/R:DLF SEEDS	GK	2	UK
30461 S	LMG FAF-3004	DK	V:DLF SEEDS/R:DLF SEEDS	3	2	FR
30462 S	Diagram/(DLF FPF-22108)	DK	V:DLF SEEDS/R:DLF SEEDS	2	2	CZ
31050 S	Barhoney/(11LPD 126)	NL	V:Barenbrug/R:Barenbrug	GK	1	NL
31051 S	Prosteva/(VV R/99)	NL	V:Oseva Uni/R:Barenbrug	GK	1	CZ
31052 S	Bardoux/(8FA 14)	NL	V:Barenbrug/R:Barenbrug	GK	1	FR
31159 S	DLF LFD-4304	DK	V:DLF SEEDS/R:DLF SEEDS	1	1	DE
31160 S	DLF LFT-018	DK	V:DLF SEEDS/R:DLF SEEDS	1	1	UK
31294 S	Thegn/(DLF LFT-41233)	DK	V:DLF SEEDS/R:DLF SEEDS	GK		UK
32038 S	DLF LFT-4725	DK	V:DLF SEEDS/R:DLF SEEDS	1		UK
32039 S	DLF LFD-101	DK	V:DLF SEEDS/R:DLF SEEDS	1		DE
<u>Perennial Ryegrass, Fodder B-testing</u>						
10178 S	Belida/(Belida Dæhnfeldt)	DK	E:DLF SEEDS/V:DLF SEEDS/R:DLF SEEDS		-	
12555 P	Tivoli/(DP 79-2-48)	DK	E:DLF-Trifolium/R:DLF-Trifolium		0	
15985 S	Calibra/(Si 13-86)	DE	V:DLF SEEDS/R:DLF SEEDS		0	
16433 S	Mathilde/(DP 88-54)	DK	V:DLF SEEDS/R:DLF SEEDS		0	
19807 S	Betty/(LPF 98135)	DE	V:DSV/R:DSV DK		16	
19820 RS	Perun/(HZ-4-DK)	CZ	V:Stanice/R:DLF SEEDS		16	
21291 RS	Kentaur	DK	V:DLF SEEDS/R:DLF SEEDS		13	

Variety code	Name/Reference	Nation	E: Title-holder V: Maintainer R: Agent	DUS	VCU	Remarks
22612 S	Boyne/(DP 10-9688)	DK	V:DLF SEEDS/R:DLF SEEDS		12	
25192 RS	Toddington/(LPD 00-5203)	DK	V:DLF SEEDS/R:DLF SEEDS		7	
25821 RS	Cancan/(L-LPD 205)	DK	V:DLF-Trifolium		-	
25826 RS	Giant	IE			-	
26908 RS	Abosan 1/(CLP 204)	NL	V:Innoseeds NL/R:DLF SEEDS		7	
26990 RS	Fedoro/(ZFI 048459)	NL	V:EuroGrass DE/R:Hunsballe		-	
27650 RS	Garbor/(Dp 10-9854t)	DK	V:DLF-Trifolium		-	
28203 RS	Diwan/(INLP 5803 T)	DK	V:DLF-Rosk./R:DLF-Rosk.		6	
28204 RS	Ovambo 1/(CLP 433)	NL	V:Innoseeds NL/R:DLF-Rosk.		6	
28205 RS	Bovini/(INLP 244)	NL	V:Innoseeds NL/R:DLF-Rosk.		6	
28348 RS	Kerry/(S11505D)	UK	V:Teagasc		-	
28979 S	Marniere/(LMG LFT-41317)	DK	V:DLF SEEDS/R:DLF SEEDS		4	
28981 S	Nashota/(DLF LFT-4025)	DK	V:DLF SEEDS/R:DLF SEEDS		4	
29154 RS	LP 21130D/(Sputnik)	DK	V:DLF-Trifolium		-	
29463 RS	Matenga/(SLM 24233/04)	DE	V:NPZ/R:Nordic Seed		-	
29682 S	Praetorian/(DLF LFD-62846)	DK	V:DLF SEEDS/R:DLF SEEDS		3	
29683 S	DLF LFD-62533/(Sitala)	DK	V:DLF SEEDS/R:DLF SEEDS		3	
29684 S	LMG LFD-62694/(Scotia)	DK	V:DLF SEEDS/R:DLF SEEDS		3	
29685 S	Redding/(DLF LFD-21427)	DK	V:DLF SEEDS/R:DLF SEEDS		3	
29686 S	DLF LFT-44446/(Tiponi)	DK	V:DLF SEEDS/R:DLF SEEDS		3	
29687 S	DLF LFT-41350/(Soyala)	DK	V:DLF SEEDS/R:DLF SEEDS		3	
29689 S	Sweetie/(DLF FAF-139)	DK	V:DLF SEEDS/R:DLF SEEDS		3	
29739 RS	Ensilvio/(ZLP 03-052)	DE	V:EuroGrass DE/R:Hunsballe		-	
29740 RS	Estrada/(ZLP 02-029)	NL	V:EuroGrass NL/R:Hunsballe		-	
29741 RS	Quadriga/(SLM 24215/03)	DE	V:NPZ/R:Nordic Seed		-	
29742 RS	Proteus/(VV 2/03)	CZ	V:Oseva/R:Nordic Seed		-	
29764 RS	Softane/(FAF 3-08-133)	DK	V:DLF-Trifolium		-	
30460 S	Evocative/(DLF LFD-62699)	DK	V:DLF SEEDS/R:DLF SEEDS		2	
30495 RS	Aberwolf/(BA14074)	UK	V:Aberystwyth/R:DSV DK		-	
30496 RS	Dorella/(LH 9975)	CH	V:DSP		-	
30497 RS	Melspring/(Ilvo 112809)	NL	V:Barenbrug		-	
30498 RS	Mischa/(St gqs)	DE	V:Steinach		-	
30499 RS	Cangou/(DP 40)	FR	V:Semences		-	
31159 S	DLF LFD-4304	DK	V:DLF SEEDS/R:DLF SEEDS		1	
31192 RS	AstonCrusader/(zlb 052225)	DE	V:DSV/R:DSV DK		1	
31193 RS	AstonHockey/(LPF 06273)	DE	V:DSV/R:DSV DK		1	
31294 S	Thegn/(DLF LFT-41233)	DK	V:DLF SEEDS/R:DLF SEEDS		-	
31319 RS	Velonit/(DLF LFT-54636)	DK	V:DLF SEEDS		2	
31340 RS	Bowie/(DLF-LFD 7069)	DK	V:DLF SEEDS		-	
31341 RS	DLF LFD-21422	DK	V:DLF SEEDS		-	
31342 RS	DLF LFD-21564	DK	V:DLF SEEDS		-	
31343 RS	DLF LFT-028	DK	V:DLF SEEDS		-	
31344 RS	Spokane/(DLF LFT-0808B2)		V:DLF SEEDS		-	
31345 RS	DLF-LFT 09068	DK	V:DLF SEEDS		-	
31346 RS	DLF LFT-147	DK	V:DLF SEEDS		-	
31347 RS	Heuberger/(DLF LFT-4006)	DK	V:DLF SEEDS		-	
31348 RS	DLF LFT-74918	DK	V:DLF SEEDS		-	
31349 RS	Federer/(LMG LFT-64764)	FR	V:LG Europe		-	
31350 RS	Jaran/(Jara)	PL			-	
31351 RS	LMG LFD-2061	DK	V:DLF SEEDS		-	
31352 RS	LMG LFT-CP 4046	DK	V:DLF SEEDS		-	
31353 RS	LMG LFT-041	DK	V:DLF SEEDS		-	
31354 RS	LMG LFT-092	DK	V:DLF SEEDS		-	
31355 RS	LMG LFT-41349	DK	V:DLF SEEDS		-	

Variety code	Name/Reference	Nation	E: Title-holder V: Maintainer R: Agent	DUS	VCU	Remarks
31356 RS	LMG LFT-41351	DK	V:DLF SEEDS		-	
31357 RS	Melbolt/(ILVO112836)	DK	V:DLF SEEDS		-	
31521 RS	LFT-1-15-95001	DK	V:DLF SEEDS		-	
31522 RS	LFT-1-15-95002	DK	V:DLF SEEDS		-	
31523 RS	LFT-1-15-95003	DK	V:DLF SEEDS		-	
31524 RS	LFT-1-15-95004	DK	V:DLF SEEDS		-	
31525 RS	LFD-1-15-95005	DK	V:DLF SEEDS		-	
31526 RS	LFD-1-15-95007	DK	V:DLF SEEDS		-	
31527 RS	LFT-1-15-95008	DK	V:DLF SEEDS		-	
31528 RS	LFT-1-15-95012	DK	V:DLF SEEDS		-	
31529 RS	LFT-1-15-95013	DK	V:DLF SEEDS		-	
<u>Festulolium Fodder A-testing</u>						
31161 S	DLF FBR-24032	DK	V:DLF SEEDS/R:DLF SEEDS	1	1	DE
32042 S	DLF FBR-22067	DK	V:DLF SEEDS/R:DLF SEEDS	1		CZ
<u>Red Fescue Fodder B-testing</u>						
29168 RS	Siskin/(DP 77-122)	DK	V:DLF-Trifolium		-	
29169 RS	Hastings/(DLF FRR-9559)	DK	V:DLF-Trifolium		-	
<u>Meadow Fescue A-testing</u>						
29688 S	Hyperbola/(DLF FPR-3159)	DK	V:DLF SEEDS/R:DLF SEEDS	4	3	CZ
31049 S	Baraika/(7FP 19R)	NL	V:Barenbrug/R:Barenbrug	GK	1	SK
<u>Meadow Fescue B-testing</u>						
29688 S	Hyperbola/(DLF FPR-3159)	DK	V:DLF SEEDS/R:DLF SEEDS		3	
<u>Timothe A-testing</u>						
31053 S	Baronaise/(11PHL 4808)	NL	V:Barenbrug/R:Barenbrug	GK	1	NL
32040 S	DLF PPR-9405	DK	V:DLF SEEDS/R:DLF SEEDS	1		DE
<u>Timothe B-testing</u>						
25179 RS	Summergraze/(DP 70-9802)				-	
31191 RS	Presto/(ZPHP308)	DE	V:DSV/R:DSV	DK	1	
<u>White Clover A-testing</u>						
32041 S	DLF TRF-3139	DK	V:DLF SEEDS/R:DLF SEEDS	1		UK
<u>White Clover B-testing</u>						
29871 RS	Brianna/(DLF 85-9591)	DK	V:DLF-Trifolium		-	
32068 RS	Bobr/(ZE--JP-1)	DE	V:NPZ		-	
<u>Red Clover A-testing</u>						
28986 S	Kalyke/(DLF TPD-96-3000)	DK	V:DLF SEEDS/R:DLF SEEDS	5	GK	DE
<u>Lucerne B-testing</u>						
32069 RS	Ludelis	FR	V:DLF SEEDS		-	
32070 RS	Mezzo/(FD 0601)	FR	V:FD		-	
32071 RS	Fado/(FD 0720)	FR	V:FD		-	

Variety code	Name/Reference	Nation	E: Title-holder V: Maintainer R: Agent	DUS	VCU	Remarks
<u>Perennial ryegrass turf testing</u>						
32270 RS	Zurich/(PPGPR124)	US	V:Peak Plant		-	
32271 RS	/(DLF LPG-3174)	DK	V:DLF SEEDS		-	
<u>Red Fescue turf testing</u>						
32268 RS	Merveille/(PPG-FRR 106)	US	V:Landmark		-	
<u>Vegetable species - Parsly</u>						
31288 S	Pilevang/(Ertholm)	DK	V:Klaus HP/R:Klaus HP	1		PL

List of Title-holder, maintainers and agents

Aberystwyth	Aberystwyth University (IBERS), Plas Gogerddan, Aberystwyth, Ceredigion, UK-SY23 3EE, UK, rmd@aber.ac.uk
Ackermann	Ackermann Saatzucht GmbH & Co. KG, Marienhofstr. 13, Postfach 70, DE-94342 Irlbach, DE, info@sz-ackermann.de
Barenbrug Bauer Bayer DE	Barenbrug Holland BV, Stationstraat 40, NL-6515 AB Nijmegen, NL, Info@Barenbrug.nl Saatzucht B. Bauer GmbH, Hofmarkstrasse 1, DE-93083 Niedertraubling, DE, Bayer CropScience AG, Alfred Nobel Strasse 50, DE-40789 Monheim/Rhein, DE, jutta.kaiser@rapsgbr.com
Bayer DK	Bayer A/S, Arne Jacobsens Alle 13, DK-2300 København S, DK, oluf.juhl@bayer.com
Boreal	Boreal Plant Breeding, Myllytie 10, FIN-31600 Jokioinen, FI, boreal@boreal.fi
BreedEx DK	BreedEX, Assendløsevejen 48, DK-4130 Viby Sj., DK, breedex@poulsen.mail.dk
Breun	Saatzucht Josef Breun GmbH & Co. KG, Amselweg 1, DE-91074 Herzogenaurach, DE, saatzucht@breun.de
Carlsberg Caussade	Carlsberg A/S, Ny Carlsberg Vej 100, DK-1799 København V., DK, bsk@crc.dk Caussade Semences, Z.I. de Meaux, BP 109, FR-82303 Caussade Cedex, FR, direction@caussade-semences.com
Danespo	Danespo A/S, Ryttervangen 1, DK-7323 Give, DK, sep@danespo.com
Danko	Danko Hodowla Roslin Sp. z o.o., Choryn 27, PL-64-000 Koscian, PL, danko@danko.pl
DLF SEEDS	DLF Seeds A/S, Højerupvej 31, DK-4660 Store Heddinge, DK, vm@dlf.dk
Donau	Saatzucht Donau GmbH. & CoKG, Saatzuchtstrasse 11, AT-2301 Probstdorf, AT, office.probstdorf@saatzucht-donau.at
Dow Agro DE	Dow AgroSciences GmbH, Im Rheinfeld 7, DE-76437 Rastatt, DE, sferrari@dow.com
DSP	DSP AG, Delley Seeds and Plants Ltd., Route de Portalban 40, 1567 Delley, CH,
DSV	Deutsche Saatveredelung AG, Weissenburger Str. 5, DE-59557 Lippstadt, DE, harder@dsv-saaten.de
DSV DK	DSV Frø Danmark A/S, Energivej 3, Maabjerg, DK-7500 Holstebro, DK, betty.schmidt@dsv-froe.dk
Euralis FR	Euralis Semences, Domaine de Sandreau, 6 Chemin de Panédautes, FR-31700 Mondonville, FR, heike.edinger@euralis.com
EuroGrass DE	Euro Grass Breeding GmbH Co. KG (EGB), Weissenburger Strasse 5, DE-59557 Lippstadt, DE, info@eurograss.com
EuroGrass NL	Euro Grass B.V., P.O. Box 26, NL-6590 AA Gennep, NL, info@eurograss.com
Farmsaat FD	Farm Saat Aktiengesellschaft, Rott 3, 48351 Everswinkel, DE, mail@farmsaat.de S.A.S. Florimond Desprez Veuve & Fils, 3, rue Florimond Desprez - BP 41, FR-59242 Cappelle en Pévèle, FR, nicolas.henry@florimond-desprez.fr
Firlbeck	Saatzuchtwirtschaft Firlbeck KG, Joh.-Firlbeck-Str. 20, Rinkam, DE-94348 Atting, DE, info@saatzucht-firlbeck.de
GIE	GIE de Recherche Europeenne sur les Gazons, 13 Rue Andre Ducatez, 26200 Montelimar, France, FR,
Hodowla	Poznanska Hodowla Roslin, 61-616 Poznan, PL-UI. Sarmacka 7, PL,
HODOWLA PL	Hodowla Roslin Strzelce Sp. Z o.o. Grupa IHAR, Glówna 20, PL-99-307 Strzelce, PL,
Hummeluhr	Konny Hummeluhr, 'Sundagergaard', Skovvej 3, Nr. Rind, DK-8832 Skals, DK,
Hunsballe	Hunsballe Frø A/S, Energivej 3, Maabjerg, DK-7500 Holstebro, DK, Hunsballe@Hunsballe.dk
Hybro	Hybro Saatzucht GmbH & Co. KG, Kleptow 53, DE-17291 Schenkenberg, DE, fromme@hybro.de
Ilvo	ILVO Institute for Agricultural and Fisheries Research, Caritassatraat 21, BE-9090 Melle, BE, ilvo@ilvo.vlaanderen.be
Innoseeds NL	Innoseeds bv, P.O. Box 1, NL-4420 AA Kapelle, NL, erik.ganzeboom@innoseeds.nl
Joordens	J. Joordens Zaadhandel BV, Schijfweg nrd 5, NL-5995 NG Kessel, NL, pjoordens@joordens.com
Klaus HP	Klaus H. Petersen og Anne Kirstine Aae Christensen, Pilevang, Oksemyrevejen 2, Ibsker, DK-3740 Svaneke, klausogkia@icloud.com
Knold&Top	Knold og Top APS, att. Erik Tybirk, Fyrrevænget 1, Hov, 8300 Odder, DK, erty@knoldogtop.com

KWS	KWS Saat SE, Grimsehlstrasse 31, Postfach 14 63, DE-37555 Einbeck, DE, info@kws.de
KWS GB	KWS UK Limited, 56 Church Street, Triplow, GB-SG8 7RE Royston Herts, UK, henriett.elek@kws-uk.com
KWS LOCHOW	KWS LOCHOW GmbH, Ferdinand-von Lochow- Strasse 5, DE-29303 Bergen, DE, ulrike.ellis@kws.com
KWS Momont	KWS Momont Recherche SARL, 7 rue de Martinval, FR-59246 Mons-en-Pévèle, FR, momont@momont.com
KWS Scandi	KWS Scandinavia A/S, Lysholt Allé 10, DK-7100 Vejle, DK, c.nymand@kws.com
Landmark	Landmark Turf & Native Seed, 4908 S. Hayford Road, Spokane, WA 99224, US,
Lantmännen	Lantmännen ek för, SE-268 81 Svalöv, , SE, malin.nilsson@lantmannen.com
LG Europe	Limagrain Europe, Biopôle Clermont-Limagne, rue Henri Mondor, FR-63360 Saint-Beauzire, FR, theo-van-der.zwaluw@limagrain.com
Limagrain DE	Limagrain GmbH, Salder Strasse 4, D-31226 Peine-Rosenthal, Germany, DE,
Limagrain DK	Limagrain A/S, Erhvervsbyvej 13, DK-8700 Horsens, DK, info@lgseeds.dk
Limagrain GB	Limagrain UK Ltd, Rothwell, Market Rasen, GB-Lincolnshire LN7 6DT, UK, Edward.Flatman@limagrain.co.uk
Linz	Saatbau Linz, Schirmerstrasse 19, Postfach 317, AT- 4060 Leonding, AT, office@saatbaulinz.at
Maisadour	Maisadour Semences, Route de Saint Sever, FR-40280 HAUT-MAUCO, FR, mathilde@maisadour.com
Malopolska	Malopolska Hodowla Roslin Spółka z.o.o., ul. Zbo'zowa 4, 30-002 Kraków, Poland , nasiona@hbp.pl
Maribo	Maribo Seed International ApS, Højbygårdvej 31, 4960 Holeby, DK, info@mariboseed.com
Momont	SARL Adrien MOMONT et Fils, 7 rue de Martinval, FR-59246 Mons-en-Pévèle, FR, momont@momont.com
Momont, A.	SARL Adrien Momont et Fils, Societé Civile Agricole, 7, rue de Martinval, FR-59246 Mons-en-Pévèle, FR, momont@momont.com
Monsanto DK	Monsanto Crop Sciences Denmark A/S, v. Lars Ipsen, Postboks 659, DK-2200 København N, DK, lars.ipsen@monsanto.com
Monsanto FR	Monsanto SAS, Centre de Recherche de Boissay, FR-28310 Toury, FR,
MONSANTO TREBES	MONSANTO SAS, Z.I. du Cairat, 20 rue du Thèron, 11 800 Trèbes, France, FR,
Monsanto US	Monsanto Technology, 800, North Lindberg Boulevard, US-63167 St. Louis, Missouri, US, matthew.clarke@monsanto.com
Moreau	Freiherr von Moreau Saatzucht GmbH, Bruderamming 1, DE-94486 Osterhofen, DE, raue@farmsaat.de
N&S	Nielsen & Smith A/S, Sydvestvej 88, Postbox 140, DK-2600 Glostrup, DK, ljp@nscorn.dk
Nickerson FR	Nickerson International Research SNC, B.P. 1, Rue Limagrain, 63720 Chappes, Frankrig, FR,
Nordic Seed	Nordic Seed A/S, Kornmarken 1, DK-8464 Galten, DK, post@nordicseed.com
Nordic Seed DE	Nordic Seed Germany GmbH, Kirchhorster Str. 16, 31688 Nienstädt, Germany, DE, gime@nordicseed.com
NPZ	Norddeutsche Pflanzenzucht, Hans-Georg Lembke KG, Hohenlieth, DE-24363 Holtsee, DE, npz-lembke@npz.de
NPZ DK	NPZ DK, Hovedgaden 75, Hellevad, DK-6230 Rødekro, DK, K.Juergensen@npz.de
NS-Böhnshausen	Nordsaat Saatzuchtgesellschaft GmbH, Hauptstrasse 1, DE-38895 Böhnshausen, DE, nordsaat@nordsaat.de
NS- LANGENSTEIN	NORDSAAT Saatzucht GmbH, Böhnshausen Str. 1, DE-38895 Langenstein, DE, nordsaat@nordsaat.de
NUSEED	NUSEED EUROPE LTD, Barnett House, 53 Fountain Street, Manchester, M2 2AN, United Kingdom, UK, ljiljana.tucic@rs.nuseed.com
Nymand	Claus Nymand, Lochow-Petkus GmbH, Åmarksvej 31, DK-4891 Toreby L., DK, c.nymand@kws.com
Oberlimpurg	Pflanzenzucht Oberlimpurg, Postfach 590, DE-74523 Schwäbisch Hall, DE,
Oseva	Oseva Pro s.r.o., Jankovcova 18, CZ-170 37 Praha 7, CZ,
Oseva Uni	Oseva Uni a.s., Na Bilé 1231, CZ-565 01 Tjekkiet, CZ,

Peak Plant PHP	Peak Plant Genetics LLC, 6785 SW Janet Way, Corvallis, OR 97333, USA, , US, P.H. Petersen, Saatzucht Lundsgaard GmbH, Streichmüller Str. 8, D-24977 Grundhof, Germany, DE, service@phpetersen.com
Pioneer DE	Pioneer Hi-Bred Northern Europe, Service Division GmbH, Apensener Str. 198, Postfach 1464, DE-21604 Buxtehude, DE, piode@pioneer.com
R2n Ragt FR	R2N S.A.S., Avenue Saint Pierre, Site de Bourran, FR-12033 Rodez Cedex, FR, ctabel@ragt.fr RAGT 2n, Rue Emile Singla, Site de Bourran, BP 3336, FR-12033 Rodez Cédex 9, FR, Lguerreiro@ragt.fr
RAGT Nordic Saaten-Union FR	RAGT Nordics ApS, v/Else Nielsen, Hjortevænget 62, DK-2880 Bagsværd, DK, enielsen@ragt.fr Saaten Union Recherche SAS, 163, Avenue de Flandre, FR-60190 Estrées-Saint-Denis, FR, recherche@saaten-union.fr
Secobra DE Secobra FR Sejet Selgen Semences	Secobra Saatzucht GmbH, Feldkirchen 3, DE-85368 Moosburg, DE, s.rudolphi@secobra.de Secobra Recherches S.A., Centre de Bois Henry, FR-78580 Maule, FR, secobra@secobra.com Sejet Planteforædling, Nørremarksvvej 67, Sejet, DK-8700 Horsens, DK, Sejet@Sejet.com Selgen Ltd., Jankovcova 18, CZ-17037 Praha 7, CZ, selgen@selgen.cz Semences de France, 62, Rue Léon Beauchamp, BP 18 59932 La Chapelle, d' Amentières cedex, France, , FR, contact@semences-de-france.fr
SEMILLAS ES	SEMILLAS FITO, S.A., Selva de Mar, 111, 08019 Barcelona, Spain, ES, msolsona@semillasfito.com
SES	SESVANDERHAVE NV/SA, Industriepark, Soldatenplein Zone 2, Nr 15, BE-3300 Tienen, BE, benoit.maudoux@sesvanderhave.com
SESvdH Sesvdh DK	SESVANDERHAVE Nederland B.V., Postbus 1, NL-4410 AA Rilland, NL, SESVANDERHAVE International B.V., Hans Møllersvej 2, 4900 Naskov, DK, henrik.moller@sesvanderhave.com
Stanice Steinach Strengs Strube Strube Research	Slechtitelská Stanice, CZ-74247 Hladke Zivotice, , CZ, Saatzucht Steinach GmbH & Co KG, Wittelsbacherstrasse 15, D-94377 Steinach, DE, Saatzucht Streng GmbH & Co. KG, Aspachhof, DE-97215 Uffenheim, DE, Strube GmbH & Co. KG, Hauptstrasse 1, DE-38387 Söllingen, DE, info@strube.net Strube Research GmbH & Co. KG, Haupstrasse 1, DE-38387 Söllingen, DE, info@strube-research.net
SW SW DE	Lantmännen SW Seed AB, SE-268 81 Svalöv, SE, info@swseed.se Lantmännen SW Seed Hadmersleben GmbH, Kroppenstedter Strasse 4, DE-29398 Hadmersleben, DE, info@swseed.com
SW NL Syngenta CH	W. Weibull B.V., P.O. Box 235, NL-8300 AE Emmeloord, NL, Syngenta Crop Protection AG, Seeds Division - Legal Department, Schwarzwaldalle 215, CH-4058 Basel, CH,
Syngenta DE Syngenta DK Syngenta FR Syngenta GB	Syngenta Seeds GmbH, Zum Knipkenbach 20, Postfach 3264, DE-32107 Bad Salzuflen, DE, Syngenta Nordics A/S, Strandlodsvej 44, DK-2300 København S., DK, dk@syngenta.com Syngenta France SAS, 12, Chemin de l'Hobit, B.P. 27, FR-31790 Saint-Sauveur, FR, Syngenta UK Ltd, Market Stainton, Market Rasen, Lincolnshire, LN8 5LJ, UK, UK, jim.duncumb@syngenta.com
Syngenta SE Teagasc Toft Unisigma v.Be	Syngenta Seeds AB, Box 302, SE-261 23 Landskrona, SE, ingvar.christensson@syngenta.com Teagasc, Oak Park Research Centre'IRL-Carlow, , IE, Axel Toft Grovvarer A/S, DK, Unisigma, GIE de Recherche et Sélection, Royte de Noyers, FR-60480 Froissy, FR, W. von Borries-Eckendorf GmbH & Co. KG, Hovedisser Str. 92, Postfach 1151, DE-33818 Leopoldshöhe, DE, info@wvb-eckendorf.de
Vandel Wiersum	Vandel Potatoes I/S, c/o Danespo A/S, Ryttervængen 1, DK-7323 Give, DK, Wiersum Plantbreeding B.V., Zeefbaan 28, NL-9672 BN Winschoten, NL, info@wiersum-plantbreeding.nl

